

Cytokeratin 14/16 rabbit pAb**Cat#: orb768908 (Manual)**

For research use only. Not intended for diagnostic use.

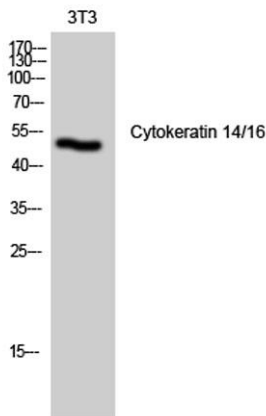
| | |
|---------------------------------|--------------------------------------------------------------------------------------------------------------------------------------------------------------|
| Product Name | Cytokeratin 14/16 rabbit pAb |
| Host species | Rabbit |
| Applications | WB;IHC;IF;ELISA |
| Species Cross-Reactivity | Human;Mouse;Rat |
| Recommended dilutions | Western Blot: 1/500 - 1/2000. Immunohistochemistry: 1/100 - 1/300. Immunofluorescence: 1/200 - 1/1000. ELISA: 1/20000. Not yet tested in other applications. |
| Immunogen | The antiserum was produced against synthesized peptide derived from human Keratin 14. AA range:1-50 |
| Specificity | Cytokeratin 14/16 Polyclonal Antibody detects endogenous levels of Cytokeratin 14/16 protein. |
| Formulation | Liquid in PBS containing 50% glycerol, 0.5% BSA and 0.02% sodium azide.. |
| Storage | Store at -20°C. Avoid repeated freeze-thaw cycles. |
| Protein Name | Keratin type I cytoskeletal 14/16 |
| Gene Name | KRT14/KRT16 |
| Cellular localization | Cytoplasm. Nucleus. Expressed in both as a filamentous pattern. |
| Purification | The antibody was affinity-purified from rabbit antiserum by affinity-chromatography using epitope-specific immunogen. |
| Clonality | Polyclonal |

Explore. Bioreagents.

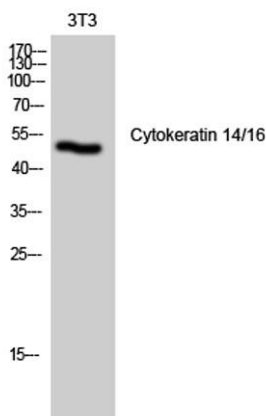
| | |
|--------------------------------|------------------------------------------------------------------------------------------------------------------------------------------------------------------------|
| Concentration | 1 mg/ml |
| Observed band | 52kD |
| Human Gene ID | 3861/3868/3872 |
| Human Swiss-Prot Number | P02533/P08779 |
| Alternative Names | KRT14; Keratin; type I cytoskeletal 14; Cytokeratin-14; CK-14; Keratin-14; K14; KRT16; KRT16A; Keratin, type I cytoskeletal 16; Cytokeratin-16; CK-16; Keratin-16; K16 |

Background

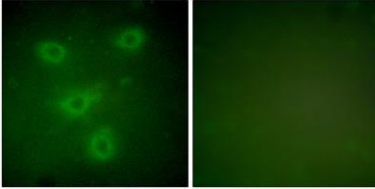
This gene encodes a member of the keratin family, the most diverse group of intermediate filaments. This gene product, a type I keratin, is usually found as a heterotetramer with two keratin 5 molecules, a type II keratin. Together they form the cytoskeleton of epithelial cells. Mutations in the genes for these keratins are associated with epidermolysis bullosa simplex. At least one pseudogene has been identified at 17p12-p11. [provided by RefSeq, Jul 2008],



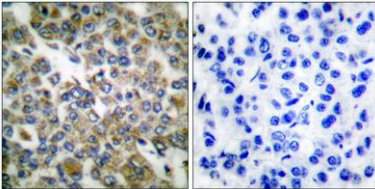
Western Blot analysis of 3T3 cells using Cytokeratin 14/16 Polyclonal Antibody diluted at 1:1000



Western Blot analysis of NIH-3T3 cells using Cytokeratin 14/16 Polyclonal Antibody diluted at 1:1000



Immunofluorescence analysis of NIH/3T3 cells, using Keratin 14 Antibody. The picture on the right is blocked with the synthesized peptide.



Immunohistochemistry analysis of paraffin-embedded human breast carcinoma tissue, using Keratin 14 Antibody. The picture on the right is blocked with the synthesized peptide.