

Cytokeratin 8 (phospho Ser432) rabbit pAb**Cat#: orb768905 (Manual)**

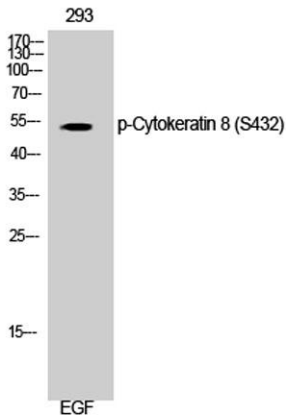
For research use only. Not intended for diagnostic use.

Product Name	Cytokeratin 8 (phospho Ser432) rabbit pAb
Host species	Rabbit
Applications	WB;IHC;IF;ELISA
Species Cross-Reactivity	Human;Mouse;Rat
Recommended dilutions	Western Blot: 1/500 - 1/2000. Immunohistochemistry: 1/100 - 1/300. Immunofluorescence: 1/200 - 1/1000. ELISA: 1/40000. Not yet tested in other applications.
Immunogen	The antiserum was produced against synthesized peptide derived from human Keratin 8 around the phosphorylation site of Ser432. AA range:401-450
Specificity	Phospho-Cytokeratin 8 (S432) Polyclonal Antibody detects endogenous levels of Cytokeratin 8 protein only when phosphorylated at S432.
Formulation	Liquid in PBS containing 50% glycerol, 0.5% BSA and 0.02% sodium azide..
Storage	Store at -20°C. Avoid repeated freeze-thaw cycles.
Protein Name	Keratin type II cytoskeletal 8
Gene Name	KRT8
Cellular localization	Cytoplasm . Nucleus, nucleoplasm . Nucleus matrix .
Purification	The antibody was affinity-purified from rabbit antiserum by affinity-chromatography using epitope-specific immunogen.
Clonality	Polyclonal

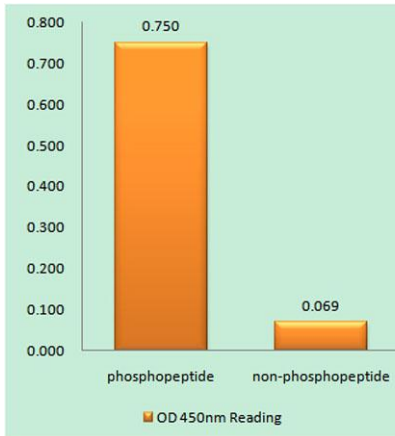
Concentration	1 mg/ml
Observed band	53kD
Human Gene ID	3856
Human Swiss-Prot Number	P05787
Alternative Names	KRT8; CYK8; Keratin; type II cytoskeletal 8; Cytokeratin-8; CK-8; Keratin-8; K8; Type-II keratin Kb8

Background

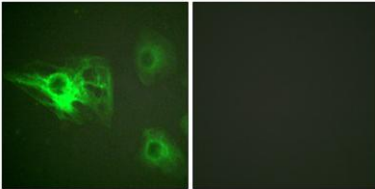
keratin 8(KRT8) Homo sapiens This gene is a member of the type II keratin family clustered on the long arm of chromosome 12. Type I and type II keratins heteropolymerize to form intermediate-sized filaments in the cytoplasm of epithelial cells. The product of this gene typically dimerizes with keratin 18 to form an intermediate filament in simple single-layered epithelial cells. This protein plays a role in maintaining cellular structural integrity and also functions in signal transduction and cellular differentiation. Mutations in this gene cause cryptogenic cirrhosis. Alternatively spliced transcript variants have been found for this gene. [provided by RefSeq, Jan 2012],



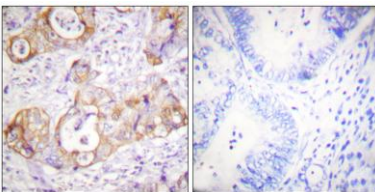
Western Blot analysis of 293 cells using Phospho-Cytokeratin 8 (S432) Polyclonal Antibody diluted at 1:1000



Enzyme-Linked Immunosorbent Assay (Phospho-ELISA) for Immunogen Phosphopeptide (Phospho-left) and Non-Phosphopeptide (Phospho-right), using Keratin 8 (Phospho-Ser432) Antibody



Immunofluorescence analysis of HeLa cells, using Keratin 8 (Phospho-Ser432) Antibody. The picture on the right is blocked with the phospho peptide.



Immunohistochemistry analysis of paraffin-embedded human colon carcinoma, using Keratin 8 (Phospho-Ser432) Antibody. The picture on the right is blocked with the phospho peptide.