

**Eg5 (phospho Thr926) rabbit pAb****Cat#: orb768904 (Manual)**

For research use only. Not intended for diagnostic use.

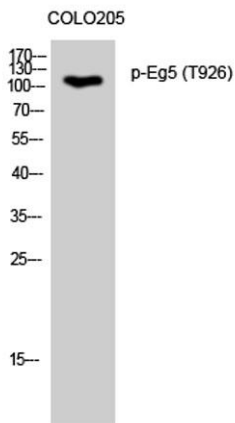
<b>Product Name</b>	Eg5 (phospho Thr926) rabbit pAb
<b>Host species</b>	Rabbit
<b>Applications</b>	WB;IHC;IF;ELISA
<b>Species Cross-Reactivity</b>	Human;Rat;Mouse;
<b>Recommended dilutions</b>	Western Blot: 1/500 - 1/2000. ELISA: 1/5000. Not yet tested in other applications.
<b>Immunogen</b>	The antiserum was produced against synthesized peptide derived from human KIF11/Eg5 around the phosphorylation site of Thr926. AA range:892-941
<b>Specificity</b>	Phospho-Eg5 (T926) Polyclonal Antibody detects endogenous levels of Eg5 protein only when phosphorylated at T926.
<b>Formulation</b>	Liquid in PBS containing 50% glycerol, 0.5% BSA and 0.02% sodium azide..
<b>Storage</b>	Store at -20°C. Avoid repeated freeze-thaw cycles.
<b>Protein Name</b>	Kinesin-like protein KIF11
<b>Gene Name</b>	KIF11
<b>Cellular localization</b>	Cytoplasm . Cytoplasm, cytoskeleton, spindle pole .
<b>Purification</b>	The antibody was affinity-purified from rabbit antiserum by affinity-chromatography using epitope-specific immunogen.
<b>Clonality</b>	Polyclonal

Explore. Bioreagents.

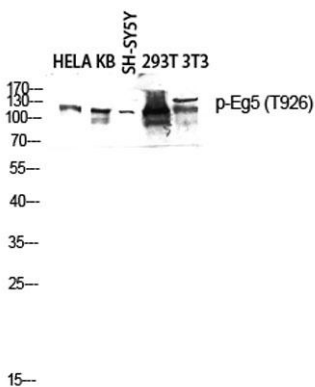
<b>Concentration</b>	1 mg/ml
<b>Observed band</b>	119kD
<b>Human Gene ID</b>	3832
<b>Human Swiss-Prot Number</b>	P52732
<b>Alternative Names</b>	KIF11; EG5; KNSL1; TRIP5; Kinesin-like protein KIF11; Kinesin-like protein 1; Kinesin-like spindle protein HKSP; Kinesin-related motor protein Eg5; Thyroid receptor-interacting protein 5; TR-interacting protein 5; TRIP-5

**Background**

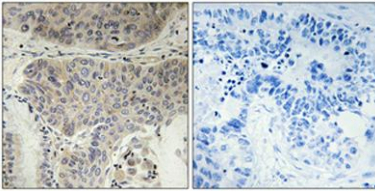
kinesin family member 11(KIF11) Homo sapiens This gene encodes a motor protein that belongs to the kinesin-like protein family. Members of this protein family are known to be involved in various kinds of spindle dynamics. The function of this gene product includes chromosome positioning, centrosome separation and establishing a bipolar spindle during cell mitosis. [provided by RefSeq, Jul 2008],



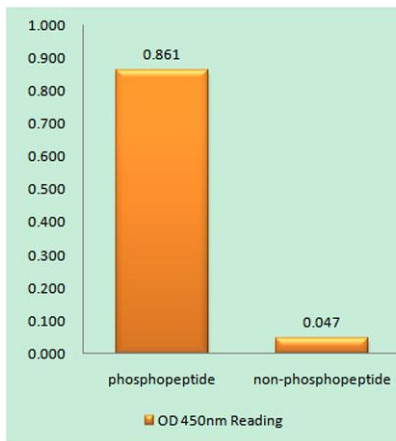
**Western Blot analysis of COLO205 cells using Phospho-Eg5 (T926) Polyclonal Antibody diluted at 1:2000 cells nucleus extracted by Minute™ Cytoplasmic and Nuclear Fractionation kit (SC-003, Invent biotech, MN, USA).**



**Western blot analysis of HELA KB SH-SY5Y 293T 3T3 lysis using Phospho-Eg5 (T926) antibody. Antibody was diluted at 1:2000 cells nucleus extracted by Minute™ Cytoplasmic and Nuclear Fractionation kit (SC-003, Invent biotech, MN, USA).**



**Immunohistochemical analysis of paraffin-embedded Human lung cancer. Antibody was diluted at 1:100(4° overnight). High-pressure and temperature Tris-EDTA,pH8.0 was used for antigen retrieval. Negative contrl (right) obtained from antibody was pre-absorbed by immunogen peptide.**



**Enzyme-Linked Immunosorbent Assay (Phospho-ELISA) for Immunogen Phosphopeptide (Phospho-left) and Non-Phosphopeptide (Phospho-right), using KIF11/Eg5 (Phospho-Thr926) Antibody**