

**Arginase I rabbit pAb****Cat#: orb768903 (Manual)**

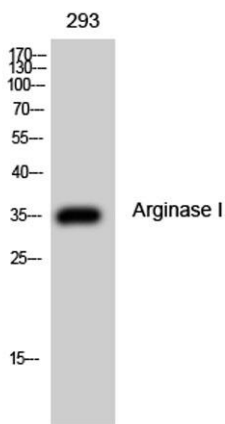
For research use only. Not intended for diagnostic use.

<b>Product Name</b>	Arginase I rabbit pAb
<b>Host species</b>	Rabbit
<b>Applications</b>	WB;IHC;IF;ELISA
<b>Species Cross-Reactivity</b>	Human;Mouse;Rat
<b>Recommended dilutions</b>	IHC-p: 100-300. Western Blot: 1/500 - 1/2000. ELISA: 1/5000. Not yet tested in other applications.
<b>Immunogen</b>	The antiserum was produced against synthesized peptide derived from human ARG1. AA range:61-110
<b>Specificity</b>	Arginase I Polyclonal Antibody detects endogenous levels of Arginase I protein.
<b>Formulation</b>	Liquid in PBS containing 50% glycerol, 0.5% BSA and 0.02% sodium azide..
<b>Storage</b>	Store at -20°C. Avoid repeated freeze-thaw cycles.
<b>Protein Name</b>	Arginase-1
<b>Gene Name</b>	ARG1
<b>Cellular localization</b>	Cytoplasm . Cytoplasmic granule . Localized in azurophil granules of neutrophils (PubMed:15546957). .
<b>Purification</b>	The antibody was affinity-purified from rabbit antiserum by affinity-chromatography using epitope-specific immunogen.
<b>Clonality</b>	Polyclonal

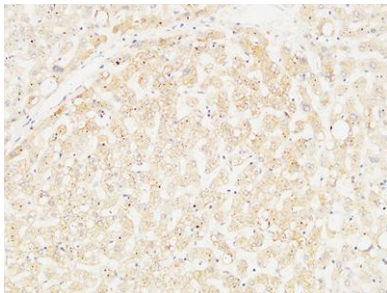
<b>Concentration</b>	1 mg/ml
<b>Observed band</b>	35kD
<b>Human Gene ID</b>	383
<b>Human Swiss-Prot Number</b>	P05089
<b>Alternative Names</b>	ARG1; Arginase-1; Liver-type arginase; Type I arginase

## Background

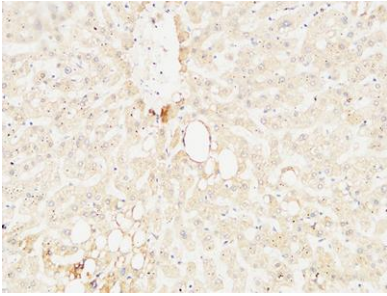
Arginase catalyzes the hydrolysis of arginine to ornithine and urea. At least two isoforms of mammalian arginase exist (types I and II) which differ in their tissue distribution, subcellular localization, immunologic crossreactivity and physiologic function. The type I isoform encoded by this gene, is a cytosolic enzyme and expressed predominantly in the liver as a component of the urea cycle. Inherited deficiency of this enzyme results in argininemia, an autosomal recessive disorder characterized by hyperammonemia. Two transcript variants encoding different isoforms have been found for this gene. [provided by RefSeq, Sep 2011],



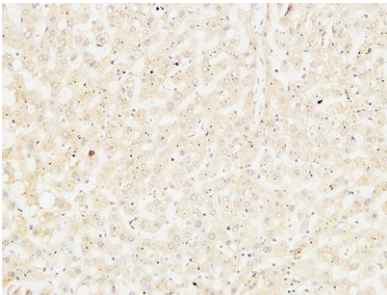
Western Blot analysis of 293 cells using Arginase I Polyclonal Antibody



Immunohistochemical analysis of paraffin-embedded Human liver. 1, Antibody was diluted at 1:200(4° overnight). 2, High-pressure and temperature EDTA, pH8.0 was used for antigen retrieval. 3,Secondary antibody was diluted at 1:200(room temperature, 30min).



**Immunohistochemical analysis of paraffin-embedded Human liver. 1, Antibody was diluted at 1:200(4° overnight). 2, High-pressure and temperature EDTA, pH8.0 was used for antigen retrieval. 3,Secondary antibody was diluted at 1:200(room temperature, 30min).**



**Immunohistochemical analysis of paraffin-embedded Human liver. 1, Antibody was diluted at 1:200(4° overnight). 2, High-pressure and temperature EDTA, pH8.0 was used for antigen retrieval. 3,Secondary antibody was diluted at 1:200(room temperature, 30min).**