

**Flk-1/Flt-4 (phospho Tyr1054/Y1063) rabbit pAb****Cat#: orb768894 (Manual)**

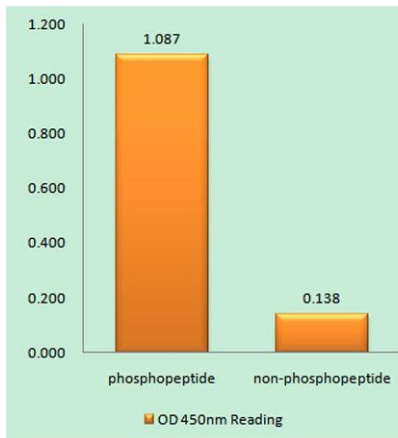
For research use only. Not intended for diagnostic use.

<b>Product Name</b>	Flk-1/Flt-4 (phospho Tyr1054/Y1063) rabbit pAb
<b>Host species</b>	Rabbit
<b>Applications</b>	IHC;IF;ELISA
<b>Species Cross-Reactivity</b>	Human;Mouse;Rat
<b>Recommended dilutions</b>	Immunohistochemistry: 1/100 - 1/300. ELISA: 1/40000. Not yet tested in other applications.
<b>Immunogen</b>	The antiserum was produced against synthesized peptide derived from human VEGFR2 around the phosphorylation site of Tyr1054. AA range:1020-1069
<b>Specificity</b>	Phospho-Flk-1/Flt-4 (Y1054/Y1063) Polyclonal Antibody detects endogenous levels of Flk-1/Flt-4 protein only when phosphorylated at Y1054/Y1063.
<b>Formulation</b>	Liquid in PBS containing 50% glycerol, 0.5% BSA and 0.02% sodium azide..
<b>Storage</b>	Store at -20°C. Avoid repeated freeze-thaw cycles.
<b>Protein Name</b>	Vascular endothelial growth factor receptor 2/3
<b>Gene Name</b>	KDR/FLT4
<b>Cellular localization</b>	Cell junction . Endoplasmic reticulum . Cell membrane . Localized with RAP1A at cell-cell junctions (By similarity). Colocalizes with ERN1 and XBP1 in the endoplasmic reticulum in endothelial cells in a vascular endothelial growth factor (VEGF)-dependent
<b>Purification</b>	The antibody was affinity-purified from rabbit antiserum by affinity-chromatography using epitope-specific immunogen.

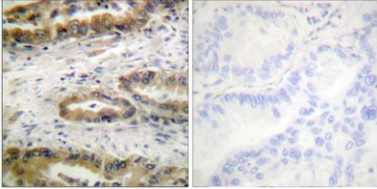
<b>Clonality</b>	Polyclonal
<b>Concentration</b>	1 mg/ml
<b>Observed band</b>	
<b>Human Gene ID</b>	3791/2324
<b>Human Swiss-Prot Number</b>	P35968/P35916
<b>Alternative Names</b>	KDR; FLK1; VEGFR2; Vascular endothelial growth factor receptor 2; VEGFR-2; Fetal liver kinase 1; FLK-1; Kinase insert domain receptor; KDR; Protein-tyrosine kinase receptor flk-1; CD antigen CD309; FLT4; VEGFR3; Vascular endothelial growth

**Background**

Vascular endothelial growth factor (VEGF) is a major growth factor for endothelial cells. This gene encodes one of the two receptors of the VEGF. This receptor, known as kinase insert domain receptor, is a type III receptor tyrosine kinase. It functions as the main mediator of VEGF-induced endothelial proliferation, survival, migration, tubular morphogenesis and sprouting. The signalling and trafficking of this receptor are regulated by multiple factors, including Rab GTPase, P2Y purine nucleotide receptor, integrin alphaVbeta3, T-cell protein tyrosine phosphatase, etc.. Mutations of this gene are implicated in infantile capillary hemangiomas. [provided by RefSeq, May 2009],



**Enzyme-Linked Immunosorbent Assay (Phospho-ELISA) for Immunogen Phosphopeptide (Phospho-left) and Non-Phosphopeptide (Phospho-right), using VEGFR2 (Phospho-Tyr1054) Antibody**



**Immunohistochemistry analysis of paraffin-embedded human lung carcinoma, using VEGFR2 (Phospho-Tyr1054) Antibody. The picture on the right is blocked with the phospho peptide.**