

**KV2.1 (phospho Ser805) rabbit pAb****Cat#: orb768866 (Manual)**

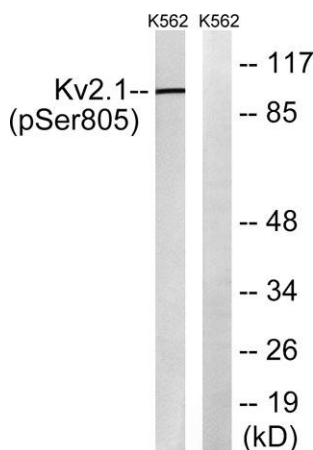
For research use only. Not intended for diagnostic use.

<b>Product Name</b>	KV2.1 (phospho Ser805) rabbit pAb
<b>Host species</b>	Rabbit
<b>Applications</b>	WB;ELISA;IHC
<b>Species Cross-Reactivity</b>	Human;Mouse;Rat
<b>Recommended dilutions</b>	WB 1:500-2000;IHC-p 1:50-300; ELISA 2000-20000
<b>Immunogen</b>	The antiserum was produced against synthesized peptide derived from human Kv2.1 around the phosphorylation site of Ser805. AA range:771-820
<b>Specificity</b>	Phospho-KV2.1 (S805) Polyclonal Antibody detects endogenous levels of KV2.1 protein only when phosphorylated at S805.
<b>Formulation</b>	Liquid in PBS containing 50% glycerol, 0.5% BSA and 0.02% sodium azide..
<b>Storage</b>	Store at -20°C. Avoid repeated freeze-thaw cycles.
<b>Protein Name</b>	Potassium voltage-gated channel subfamily B member 1
<b>Gene Name</b>	KCNB1
<b>Cellular localization</b>	Cell membrane . Perikaryon . Cell projection, axon . Cell projection, dendrite . Membrane; Multi-pass membrane protein. Cell junction, synapse, postsynaptic cell membrane . Cell junction, synapse . Cell junction, synapse, synaptosome . Lateral cell membra
<b>Purification</b>	The antibody was affinity-purified from rabbit antiserum by affinity-chromatography using epitope-specific immunogen.

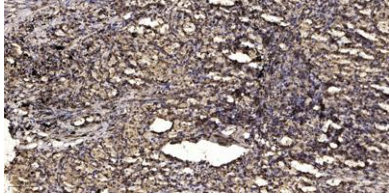
<b>Clonality</b>	Polyclonal
<b>Concentration</b>	1 mg/ml
<b>Observed band</b>	96kD
<b>Human Gene ID</b>	3745
<b>Human Swiss-Prot Number</b>	Q14721
<b>Alternative Names</b>	KCNB1; Potassium voltage-gated channel subfamily B member 1; Delayed rectifier potassium channel 1; DRK1; h-DRK1; Voltage-gated potassium channel subunit Kv2.1

## Background

Voltage-gated potassium (Kv) channels represent the most complex class of voltage-gated ion channels from both functional and structural standpoints. Their diverse functions include regulating neurotransmitter release, heart rate, insulin secretion, neuronal excitability, epithelial electrolyte transport, smooth muscle contraction, and cell volume. Four sequence-related potassium channel genes - shaker, shaw, shab, and shal - have been identified in *Drosophila*, and each has been shown to have human homolog(s). This gene encodes a member of the potassium channel, voltage-gated, shab-related subfamily. This member is a delayed rectifier potassium channel and its activity is modulated by some other family members. [provided by RefSeq, Jul 2008],



**Western blot analysis of lysates from K562 cells treated with TNF 200ng/ml 30', using Kv2.1 (Phospho-Ser805) Antibody. The lane on the right is blocked with the phospho peptide.**



**Immunohistochemical analysis of paraffin-embedded human Squamous cell carcinoma of lung. 1, Antibody was diluted at 1:200(4° overnight). 2, Tris-EDTA,pH9.0 was used for antigen retrieval. 3,Secondary antibody was diluted at 1:200(room temperature, 45min).**