

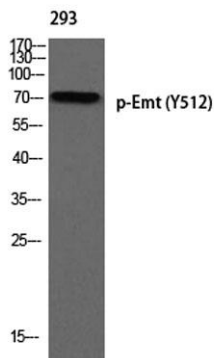
Emt (phospho Tyr512) rabbit pAb**Cat#: orb768835 (Manual)**

For research use only. Not intended for diagnostic use.

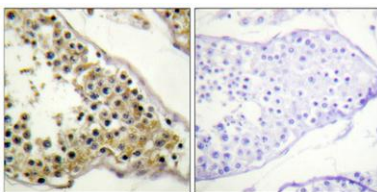
Product Name	Emt (phospho Tyr512) rabbit pAb
Host species	Rabbit
Applications	WB;IHC;IF;ELISA
Species Cross-Reactivity	Human;Mouse
Recommended dilutions	WB 1:500-2000 ,Immunohistochemistry: 1/100 - 1/300. ELISA: 1/5000. Not yet tested in other applications.
Immunogen	The antiserum was produced against synthesized peptide derived from human ITK around the phosphorylation site of Tyr512. AA range:478-527
Specificity	Phospho-Emt (Y512) Polyclonal Antibody detects endogenous levels of Emt protein only when phosphorylated at Y512.
Formulation	Liquid in PBS containing 50% glycerol, 0.5% BSA and 0.02% sodium azide..
Storage	Store at -20°C. Avoid repeated freeze-thaw cycles.
Protein Name	Tyrosine-protein kinase ITK/TSK
Gene Name	ITK
Cellular localization	Cytoplasm . Nucleus . Localizes in the vicinity of cell surface receptors in the plasma membrane after receptor stimulation.
Purification	The antibody was affinity-purified from rabbit antiserum by affinity-chromatography using epitope-specific immunogen.
Clonality	Polyclonal

Concentration	1 mg/ml
Observed band	72kD
Human Gene ID	3702
Human Swiss-Prot Number	Q08881
Alternative Names	ITK; EMT; LYK; Tyrosine-protein kinase ITK/TSK; Interleukin-2-inducible T-cell kinase; IL-2-inducible T-cell kinase; Kinase EMT; T-cell-specific kinase; Tyrosine-protein kinase Lyk

Background This gene encodes an intracellular tyrosine kinase expressed in T-cells. The protein contains both SH2 and SH3 domains which are often found in intracellular kinases. It is thought to play a role in T-cell proliferation and differentiation. [provided by RefSeq, Jul 2008],



Western blot analysis of 293 using p-Emt (Y512) antibody.



Immunohistochemical analysis of paraffin-embedded Human testis. Antibody was diluted at 1:100(4° overnight). High-pressure and temperature Tris-EDTA,pH8.0 was used for antigen retrieval. Negative contrl (right) obtained from antibody was pre-absorbed by