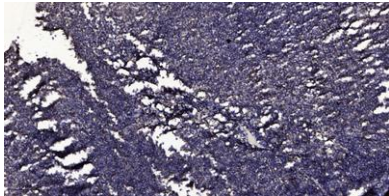


Cleaved-ITI-H4 70k (R661) rabbit pAb**Cat#: orb768834 (Manual)**

For research use only. Not intended for diagnostic use.

Product Name	Cleaved-ITI-H4 70k (R661) rabbit pAb
Host species	Rabbit
Applications	IHC;IF;ELISA
Species Cross-Reactivity	Human;Rat;Mouse;
Recommended dilutions	Immunohistochemistry: 1/100 - 1/300. ELISA: 1/10000. Not yet tested in other applications.
Immunogen	The antiserum was produced against synthesized peptide derived from human ITIH4. AA range:612-661
Specificity	Cleaved-ITI-H4 70k (R661) Polyclonal Antibody detects endogenous levels of fragment of activated ITI-H4 70k protein resulting from cleavage adjacent to R661.
Formulation	Liquid in PBS containing 50% glycerol, 0.5% BSA and 0.02% sodium azide..
Storage	Store at -20°C. Avoid repeated freeze-thaw cycles.
Protein Name	Inter-alpha-trypsin inhibitor heavy chain H4
Gene Name	ITIH4
Cellular localization	Secreted.
Purification	The antibody was affinity-purified from rabbit antiserum by affinity-chromatography using epitope-specific immunogen.
Clonality	Polyclonal

Concentration	1 mg/ml
Observed band	
Human Gene ID	3700
Human Swiss-Prot Number	Q14624
Alternative Names	ITIH4; IHRP; ITIHL1; PK120; Inter-alpha-trypsin inhibitor heavy chain H4; ITI heavy chain H4; ITI-HC4; Inter-alpha-inhibitor heavy chain 4; Inter-alpha-trypsin inhibitor family heavy chain-related protein; IHRP; Plasma kallikrein sensitive
Background	The protein encoded by this gene is secreted into the blood, where it is cleaved by plasma kallikrein into two smaller forms. Expression of this gene has been detected only in liver, and it seems to be upregulated during surgical trauma. This gene is part of a cluster of similar genes on chromosome 3. Two transcript variants encoding different isoforms have been found for this gene. [provided by RefSeq, Oct 2009],



Immunohistochemical analysis of paraffin-embedded human tonsil. 1, Antibody was diluted at 1:200(4° overnight). 2, Tris-EDTA,pH9.0 was used for antigen retrieval. 3,Secondary antibody was diluted at 1:200(room temperature, 30min).