

**Integrin  $\beta$ 3 (phospho Tyr773) rabbit pAb****Cat#: orb768831 (Manual)**

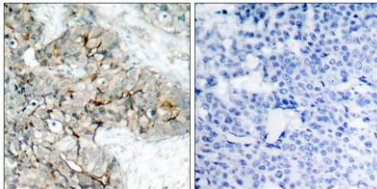
For research use only. Not intended for diagnostic use.

|                                 |   |
|---------------------------------|---|
| <b>Product Name</b>             | Integrin $\beta$ 3 (phospho Tyr773) rabbit pAb  |
| <b>Host species</b>             | Rabbit  |
| <b>Applications</b>             | WB;IHC;IF;ELISA   |
| <b>Species Cross-Reactivity</b> | Human;Mouse;Rat   |
| <b>Recommended dilutions</b>    | Western Blot: 1/500 - 1/2000. Immunohistochemistry: 1/100 - 1/300. ELISA: 1/10000. Not yet tested in other applications.  |
| <b>Immunogen</b>                | The antiserum was produced against synthesized peptide derived from human Integrin beta3 around the phosphorylation site of Tyr773. AA range:739-788  |
| <b>Specificity</b>              | Phospho-Integrin $\beta$ 3 (Y773) Polyclonal Antibody detects endogenous levels of Integrin $\beta$ 3 protein only when phosphorylated at Y773.   |
| <b>Formulation</b>              | Liquid in PBS containing 50% glycerol, 0.5% BSA and 0.02% sodium azide..  |
| <b>Storage</b>                  | Store at -20°C. Avoid repeated freeze-thaw cycles.  |
| <b>Protein Name</b>             | Integrin beta-3   |
| <b>Gene Name</b>                | ITGB3   |
| <b>Cellular localization</b>    | Cell membrane ; Single-pass type I membrane protein . Cell projection, lamellipodium membrane . Cell junction, focal adhesion . Cell junction, synapse, postsynaptic cell membrane ; Single-pass type I membrane protein . Cell junction, synapse . |
| <b>Purification</b>             | The antibody was affinity-purified from rabbit antiserum by affinity-chromatography using epitope-specific immunogen.   |

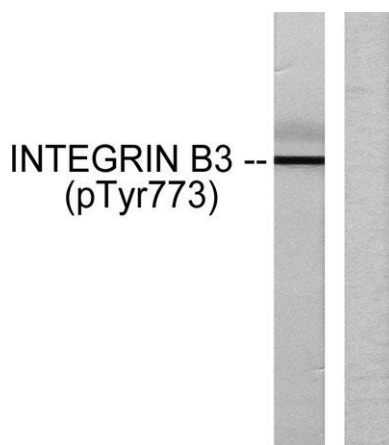
|                                |  |
|--------------------------------|--|
| <b>Clonality</b>               | Polyclonal   |
| <b>Concentration</b>           | 1 mg/ml  |
| <b>Observed band</b>           | 130kD  |
| <b>Human Gene ID</b>           | 3690   |
| <b>Human Swiss-Prot Number</b> | P05106   |
| <b>Alternative Names</b>       | ITGB3; GP3A; Integrin beta-3; Platelet membrane glycoprotein IIIa; GPIIIa; CD antigen CD61 |

## Background

The ITGB3 protein product is the integrin beta chain beta 3. Integrins are integral cell-surface proteins composed of an alpha chain and a beta chain. A given chain may combine with multiple partners resulting in different integrins. Integrin beta 3 is found along with the alpha IIb chain in platelets. Integrins are known to participate in cell adhesion as well as cell-surface mediated signalling. [provided by RefSeq, Jul 2008],



**Immunohistochemistry analysis of paraffin-embedded human breast carcinoma, using Integrin beta3 (Phospho-Tyr773) Antibody. The picture on the right is blocked with the phospho peptide.**



**Western blot analysis of lysates from HL-60 cells treated with H2O2, using Integrin beta3 (Phospho-Tyr773) Antibody. The lane on the right is blocked with the phospho peptide.**



Explore. Bioreagents.

[www.biorbyt.com](http://www.biorbyt.com)