

Integrin β 2 (phospho Thr758) rabbit pAb**Cat#: orb768826 (Manual)**

For research use only. Not intended for diagnostic use.

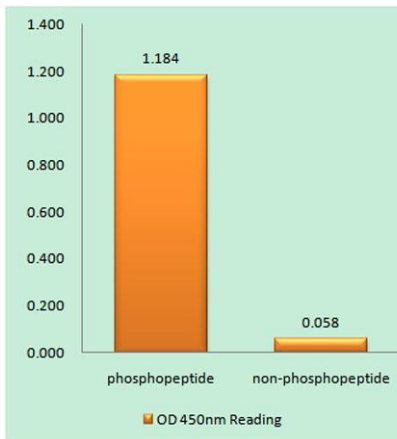
Product Name	Integrin β 2 (phospho Thr758) rabbit pAb
Host species	Rabbit
Applications	WB;IHC
Species Cross-Reactivity	Human;Mouse;Rat
Recommended dilutions	WB 1:500-2000;IHC-p 1:50-300
Immunogen	The antiserum was produced against synthesized peptide derived from human CD18/ITGB2 around the phosphorylation site of Thr758. AA range:720-769
Specificity	Phospho-Integrin β 2 (T758) Polyclonal Antibody detects endogenous levels of Integrin β 2 protein only when phosphorylated at T758.
Formulation	Liquid in PBS containing 50% glycerol, 0.5% BSA and 0.02% sodium azide..
Storage	Store at -20°C. Avoid repeated freeze-thaw cycles.
Protein Name	Integrin beta-2
Gene Name	ITGB2
Cellular localization	Cell membrane ; Single-pass type I membrane protein . Membrane raft ; Single-pass type I membrane protein .
Purification	The antibody was affinity-purified from rabbit antiserum by affinity-chromatography using epitope-specific immunogen.
Clonality	Polyclonal

Explore. Bioreagents.

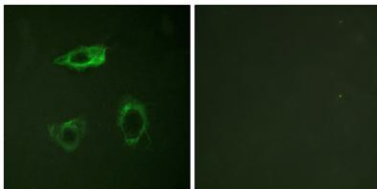
Concentration	1 mg/ml
Observed band	170kD
Human Gene ID	3689
Human Swiss-Prot Number	P05107
Alternative Names	ITGB2; CD18; MFI7; Integrin beta-2; Cell surface adhesion glycoproteins LFA-1/CR3/p150; 95 subunit beta; Complement receptor C3 subunit beta; CD antigen CD18

Background

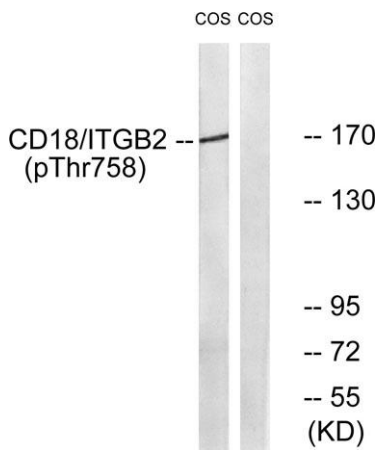
This gene encodes an integrin beta chain, which combines with multiple different alpha chains to form different integrin heterodimers. Integrins are integral cell-surface proteins that participate in cell adhesion as well as cell-surface mediated signalling. The encoded protein plays an important role in immune response and defects in this gene cause leukocyte adhesion deficiency. Alternative splicing results in multiple transcript variants. [provided by RefSeq, Dec 2014],



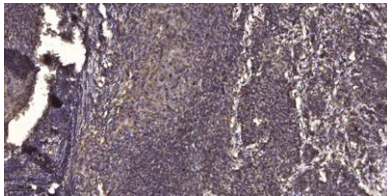
Enzyme-Linked Immunosorbent Assay (Phospho-ELISA) for Immunogen Phosphopeptide (Phospho-left) and Non-Phosphopeptide (Phospho-right), using CD18/ITGB2 (Phospho-Thr758) Antibody



Immunofluorescence analysis of HepG2 cells, using CD18/ITGB2 (Phospho-Thr758) Antibody. The picture on the right is blocked with the phospho peptide.



Western blot analysis of lysates from COS7 cells treated with EGF 200ng/ml 30', using CD18/ITGB2 (Phospho-Thr758) Antibody. The lane on the right is blocked with the phospho peptide.



Immunohistochemical analysis of paraffin-embedded human cervical carcinoma. 1, Antibody was diluted at 1:200(4^o overnight). 2, Tris-EDTA,pH9.0 was used for antigen retrieval. 3,Secondary antibody was diluted at 1:200(room temperature, 45min).