

IRF-3 (phospho Ser386) rabbit pAb**Cat#: orb768797 (Manual)**

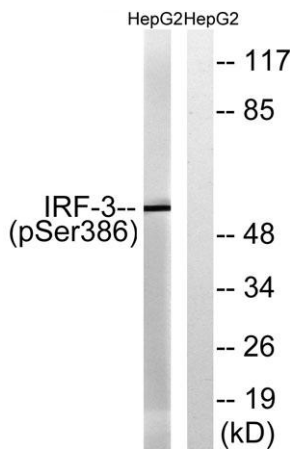
For research use only. Not intended for diagnostic use.

Product Name	IRF-3 (phospho Ser386) rabbit pAb
Host species	Rabbit
Applications	WB;IHC
Species Cross-Reactivity	Human;Rat;Mouse;
Recommended dilutions	WB 1:500-2000;IHC-p 1:50-300
Immunogen	The antiserum was produced against synthesized peptide derived from human IRF-3 around the phosphorylation site of Ser386. AA range:352-401
Specificity	Phospho-IRF-3 (S386) Polyclonal Antibody detects endogenous levels of IRF-3 protein only when phosphorylated at S386.
Formulation	Liquid in PBS containing 50% glycerol, 0.5% BSA and 0.02% sodium azide..
Storage	Store at -20°C. Avoid repeated freeze-thaw cycles.
Protein Name	Interferon regulatory factor 3
Gene Name	IRF3
Cellular localization	Cytoplasm . Nucleus . Mitochondrion . Shuttles between cytoplasmic and nuclear compartments, with export being the prevailing effect (PubMed:10805757). When activated, IRF3 interaction with CREBBP prevents its export to the cytoplasm (PubMed:10805757). Re
Purification	The antibody was affinity-purified from rabbit antiserum by affinity-chromatography using epitope-specific immunogen.

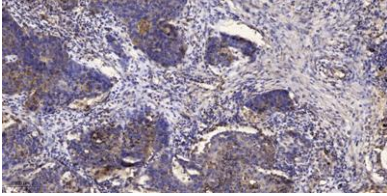
Clonality	Polyclonal
Concentration	1 mg/ml
Observed band	48-55kd
Human Gene ID	3661
Human Swiss-Prot Number	Q14653
Alternative Names	IRF3; Interferon regulatory factor 3; IRF-3

Background

This gene encodes a member of the interferon regulatory transcription factor (IRF) family. The encoded protein is found in an inactive cytoplasmic form that upon serine/threonine phosphorylation forms a complex with CREBBP. This complex translocates to the nucleus and activates the transcription of interferons alpha and beta, as well as other interferon-induced genes. Alternatively spliced transcript variants encoding multiple isoforms have been observed for this gene. [provided by RefSeq, Nov 2011],



Western blot analysis of lysates from HepG2 cells treated with EGF 200ng/ml 30', using IRF-3 (Phospho-Ser386) Antibody. The lane on the right is blocked with the phospho peptide.



Immunohistochemical analysis of paraffin-embedded human Squamous cell carcinoma of lung. 1, Antibody was diluted at 1:200(4° overnight). 2, Tris-EDTA,pH9.0 was used for antigen retrieval. 3,Secondary antibody was diluted at 1:200(room temperature, 45min).