

**IRAK-1 (phospho Thr100) rabbit pAb****Cat#: orb768790 (Manual)**

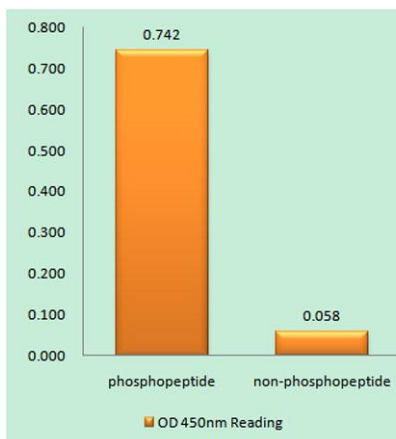
For research use only. Not intended for diagnostic use.

<b>Product Name</b>	IRAK-1 (phospho Thr100) rabbit pAb
<b>Host species</b>	Rabbit
<b>Applications</b>	WB;IHC;IF;ELISA
<b>Species Cross-Reactivity</b>	Human;Mouse;Rat
<b>Recommended dilutions</b>	Western Blot: 1/500 - 1/2000. Immunohistochemistry: 1/100 - 1/300. ELISA: 1/20000. Not yet tested in other applications.
<b>Immunogen</b>	The antiserum was produced against synthesized peptide derived from human IRAK1 around the phosphorylation site of Thr100. AA range:66-115
<b>Specificity</b>	Phospho-IRAK-1 (T100) Polyclonal Antibody detects endogenous levels of IRAK-1 protein only when phosphorylated at T100.
<b>Formulation</b>	Liquid in PBS containing 50% glycerol, 0.5% BSA and 0.02% sodium azide..
<b>Storage</b>	Store at -20°C. Avoid repeated freeze-thaw cycles.
<b>Protein Name</b>	Interleukin-1 receptor-associated kinase 1
<b>Gene Name</b>	IRAK1
<b>Cellular localization</b>	Cytoplasm . Nucleus . Lipid droplet . Translocates to the nucleus when sumoylated. RSAD2/viperin recruits it to the lipid droplet (By similarity). .
<b>Purification</b>	The antibody was affinity-purified from rabbit antiserum by affinity-chromatography using epitope-specific immunogen.
<b>Clonality</b>	Polyclonal

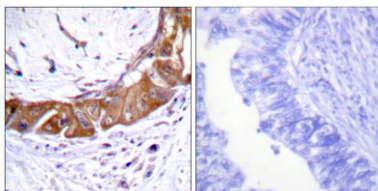
<b>Concentration</b>	1 mg/ml
<b>Observed band</b>	77kD
<b>Human Gene ID</b>	3654
<b>Human Swiss-Prot Number</b>	P51617
<b>Alternative Names</b>	IRAK1; IRAK; Interleukin-1 receptor-associated kinase 1; IRAK-1

**Background**

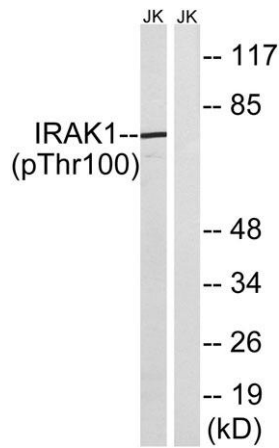
This gene encodes the interleukin-1 receptor-associated kinase 1, one of two putative serine/threonine kinases that become associated with the interleukin-1 receptor (IL1R) upon stimulation. This gene is partially responsible for IL1-induced upregulation of the transcription factor NF-kappa B. Alternatively spliced transcript variants encoding different isoforms have been found for this gene. [provided by RefSeq, Jul 2008],



**Enzyme-Linked Immunosorbent Assay (Phospho-ELISA) for Immunogen Phosphopeptide (Phospho-left) and Non-Phosphopeptide (Phospho-right), using IRAK1 (Phospho-Thr100) Antibody**



**Immunohistochemistry analysis of paraffin-embedded human colon carcinoma, using IRAK1 (Phospho-Thr100) Antibody. The picture on the right is blocked with the phospho peptide.**



Western blot analysis of lysates from Jurkat cells treated with heat shock, using IRAK1 (Phospho-Thr100) Antibody. The lane on the right is blocked with the phospho peptide.