

IRAK-1 (phospho Thr209) rabbit pAb**Cat#: orb768789 (Manual)**

For research use only. Not intended for diagnostic use.

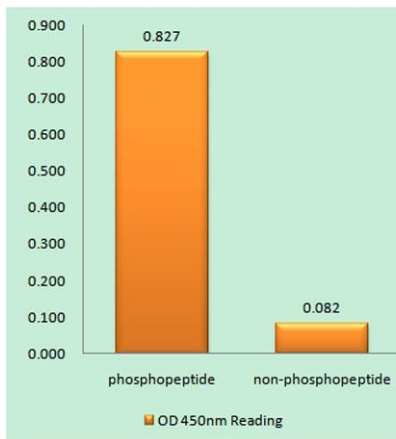
Product Name	IRAK-1 (phospho Thr209) rabbit pAb
Host species	Rabbit
Applications	WB;ELISA;IHC
Species Cross-Reactivity	Human;Rat;Mouse;
Recommended dilutions	WB 1:500-2000;IHC-p 1:50-300; ELISA 2000-20000
Immunogen	The antiserum was produced against synthesized peptide derived from human IRAK1 around the phosphorylation site of Thr209. AA range:175-224
Specificity	Phospho-IRAK-1 (T209) Polyclonal Antibody detects endogenous levels of IRAK-1 protein only when phosphorylated at T209.
Formulation	Liquid in PBS containing 50% glycerol, 0.5% BSA and 0.02% sodium azide..
Storage	Store at -20°C. Avoid repeated freeze-thaw cycles.
Protein Name	Interleukin-1 receptor-associated kinase 1
Gene Name	IRAK1
Cellular localization	Cytoplasm . Nucleus . Lipid droplet . Translocates to the nucleus when sumoylated. RSAD2/viperin recruits it to the lipid droplet (By similarity). .
Purification	The antibody was affinity-purified from rabbit antiserum by affinity-chromatography using epitope-specific immunogen.
Clonality	Polyclonal

Explore. Bioreagents.

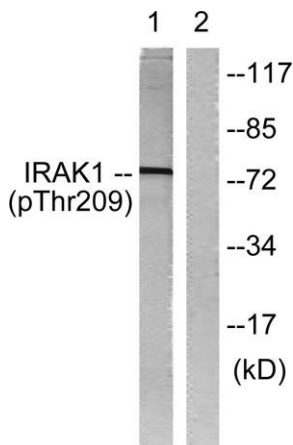
Concentration	1 mg/ml
Observed band	77kD
Human Gene ID	3654
Human Swiss-Prot Number	P51617
Alternative Names	IRAK1; IRAK; Interleukin-1 receptor-associated kinase 1; IRAK-1

Background

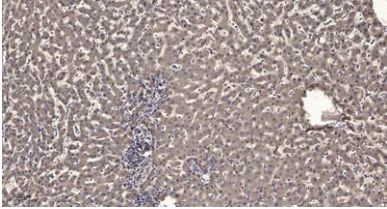
This gene encodes the interleukin-1 receptor-associated kinase 1, one of two putative serine/threonine kinases that become associated with the interleukin-1 receptor (IL1R) upon stimulation. This gene is partially responsible for IL1-induced upregulation of the transcription factor NF-kappa B. Alternatively spliced transcript variants encoding different isoforms have been found for this gene. [provided by RefSeq, Jul 2008],



Enzyme-Linked Immunosorbent Assay (Phospho-ELISA) for Immunogen Phosphopeptide (Phospho-left) and Non-Phosphopeptide (Phospho-right), using IRAK1 (Phospho-Thr209) Antibody



Western blot analysis of lysates from HeLa cells, using IRAK1 (Phospho-Thr209) Antibody. The lane on the right is blocked with the phospho peptide.



Immunohistochemical analysis of paraffin-embedded human liver cancer. 1, Antibody was diluted at 1:200(4° overnight). 2, Tris-EDTA,pH9.0 was used for antigen retrieval. 3,Secondary antibody was diluted at 1:200(room temperature, 45min).