

**IL-13R $\alpha$ 1 (phospho Tyr405) rabbit pAb****Cat#: orb768771 (Manual)**

For research use only. Not intended for diagnostic use.

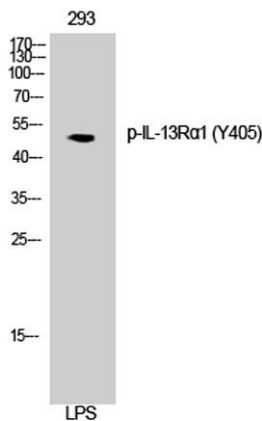
<b>Product Name</b>	IL-13R $\alpha$ 1 (phospho Tyr405) rabbit pAb
<b>Host species</b>	Rabbit
<b>Applications</b>	WB;IF;ELISA
<b>Species Cross-Reactivity</b>	Human;Mouse;Rat
<b>Recommended dilutions</b>	Western Blot: 1/500 - 1/2000. Immunofluorescence: 1/200 - 1/1000. ELISA: 1/10000. Not yet tested in other applications.
<b>Immunogen</b>	The antiserum was produced against synthesized peptide derived from human IL-13R alpha1 around the phosphorylation site of Tyr405. AA range:371-420
<b>Specificity</b>	Phospho-IL-13R $\alpha$ 1 (Y405) Polyclonal Antibody detects endogenous levels of IL-13R $\alpha$ 1 protein only when phosphorylated at Y405.
<b>Formulation</b>	Liquid in PBS containing 50% glycerol, 0.5% BSA and 0.02% sodium azide..
<b>Storage</b>	Store at -20°C. Avoid repeated freeze-thaw cycles.
<b>Protein Name</b>	Interleukin-13 receptor subunit alpha-1
<b>Gene Name</b>	IL13RA1
<b>Cellular localization</b>	Membrane; Single-pass type I membrane protein.
<b>Purification</b>	The antibody was affinity-purified from rabbit antiserum by affinity-chromatography using epitope-specific immunogen.
<b>Clonality</b>	Polyclonal

Explore. Bioreagents.

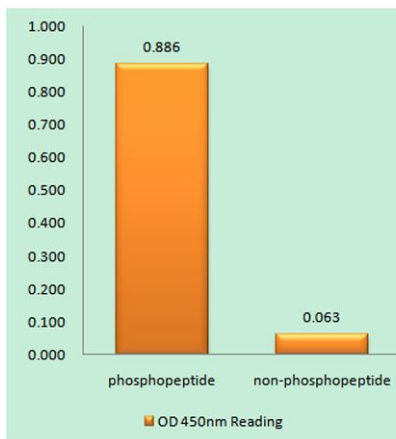
<b>Concentration</b>	1 mg/ml
<b>Observed band</b>	49kD
<b>Human Gene ID</b>	3597
<b>Human Swiss-Prot Number</b>	P78552
<b>Alternative Names</b>	IL13RA1; IL13R; IL13RA; Interleukin-13 receptor subunit alpha-1; IL-13 receptor subunit alpha-1; IL-13R subunit alpha-1; IL-13R-alpha-1; IL-13RA1; Cancer/testis antigen 19; CT19; CD antigen CD213a1

**Background**

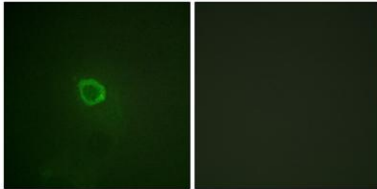
The protein encoded by this gene is a subunit of the interleukin 13 receptor. This subunit forms a receptor complex with IL4 receptor alpha, a subunit shared by IL13 and IL4 receptors. This subunit serves as a primary IL13-binding subunit of the IL13 receptor, and may also be a component of IL4 receptors. This protein has been shown to bind tyrosine kinase TYK2, and thus may mediate the signaling processes that lead to the activation of JAK1, STAT3 and STAT6 induced by IL13 and IL4. [provided by RefSeq, Jul 2008],



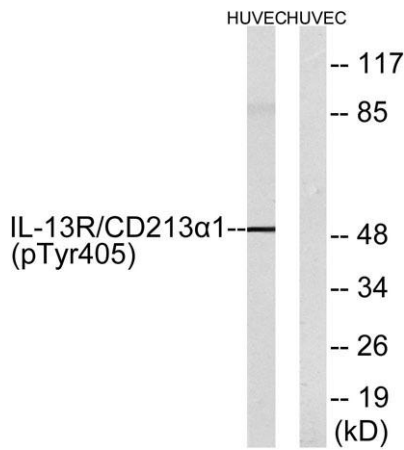
**Western Blot analysis of 3T3 cells using Phospho-IL-13Rα1 (Y405) Polyclonal Antibody**



**Enzyme-Linked Immunosorbent Assay (Phospho-ELISA) for Immunogen Phosphopeptide (Phospho-left) and Non-Phosphopeptide (Phospho-right), using IL-13R alpha1 (Phospho-Tyr405) Antibody**



**Immunofluorescence analysis of HepG2 cells, using IL-13R alpha1 (Phospho-Tyr405) Antibody. The picture on the right is blocked with the phospho peptide.**



**Western blot analysis of lysates from HUVEC cells treated with serum 20% 15', using IL-13R alpha1 (Phospho-Tyr405) Antibody. The lane on the right is blocked with the phospho peptide.**