

AQP2 (phospho Ser256) rabbit pAb**Cat#: orb768768 (Manual)**

For research use only. Not intended for diagnostic use.

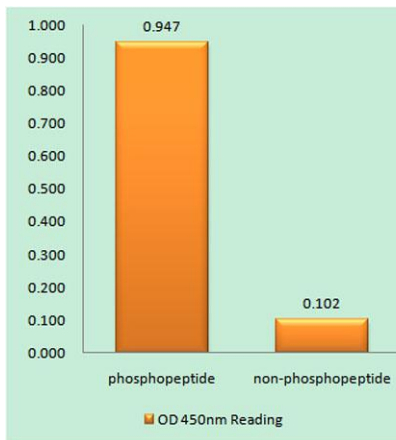
Product Name	AQP2 (phospho Ser256) rabbit pAb
Host species	Rabbit
Applications	IHC;IF;ELISA
Species Cross-Reactivity	Human;Mouse;Rat
Recommended dilutions	Immunohistochemistry: 1/100 - 1/300. ELISA: 1/40000. Not yet tested in other applications.
Immunogen	The antiserum was produced against synthesized peptide derived from human Aquaporin 2 around the phosphorylation site of Ser256. AA range:222-271
Specificity	Phospho-AQP2 (S256) Polyclonal Antibody detects endogenous levels of AQP2 protein only when phosphorylated at S256.
Formulation	Liquid in PBS containing 50% glycerol, 0.5% BSA and 0.02% sodium azide..
Storage	Store at -20°C. Avoid repeated freeze-thaw cycles.
Protein Name	Aquaporin-2
Gene Name	AQP2
Cellular localization	Apical cell membrane ; Multi-pass membrane protein . Basolateral cell membrane ; Multi-pass membrane protein . Cell membrane ; Multi-pass membrane protein . Cytoplasmic vesicle membrane ; Multi-pass membrane protein . Golgi apparatus, trans-Golgi network
Purification	The antibody was affinity-purified from rabbit antiserum by affinity-chromatography using epitope-specific immunogen.

Explore. Bioreagents.

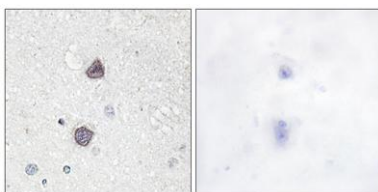
Clonality	Polyclonal
Concentration	1 mg/ml
Observed band	
Human Gene ID	359
Human Swiss-Prot Number	P41181
Alternative Names	AQP2; Aquaporin-2; AQP-2; ADH water channel; Aquaporin-CD; AQP-CD; Collecting duct water channel protein; WCH-CD; Water channel protein for renal collecting duct

Background

This gene encodes a water channel protein located in the kidney collecting tubule. It belongs to the MIP/aquaporin family, some members of which are clustered together on chromosome 12q13. Mutations in this gene have been linked to autosomal dominant and recessive forms of nephrogenic diabetes insipidus. [provided by RefSeq, Oct 2008],



Enzyme-Linked Immunosorbent Assay (Phospho-ELISA) for Immunogen Phosphopeptide (Phospho-left) and Non-Phosphopeptide (Phospho-right), using Aquaporin 2 (Phospho-Ser256) Antibody



Immunohistochemistry analysis of paraffin-embedded human brain, using Aquaporin 2 (Phospho-Ser256) Antibody. The picture on the right is blocked with the phospho peptide.



Explore. Bioreagents.

www.biorbyt.com