

**IL-10R $\alpha$  (phospho Tyr496) rabbit pAb****Cat#: orb768766 (Manual)**

For research use only. Not intended for diagnostic use.

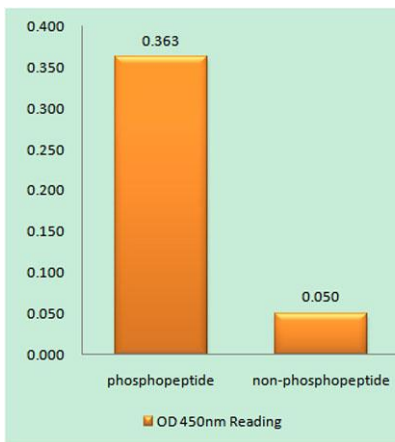
<b>Product Name</b>	IL-10R $\alpha$ (phospho Tyr496) rabbit pAb
<b>Host species</b>	Rabbit
<b>Applications</b>	WB;ELISA
<b>Species Cross-Reactivity</b>	Human;Rat;Mouse;
<b>Recommended dilutions</b>	Western Blot: 1/500 - 1/2000. ELISA: 1/20000. Not yet tested in other applications.
<b>Immunogen</b>	The antiserum was produced against synthesized peptide derived from human IL-10R alpha around the phosphorylation site of Tyr496. AA range:462-511
<b>Specificity</b>	Phospho-IL-10R $\alpha$ (Y496) Polyclonal Antibody detects endogenous levels of IL-10R $\alpha$ protein only when phosphorylated at Y496.
<b>Formulation</b>	Liquid in PBS containing 50% glycerol, 0.5% BSA and 0.02% sodium azide..
<b>Storage</b>	Store at -20°C. Avoid repeated freeze-thaw cycles.
<b>Protein Name</b>	Interleukin-10 receptor subunit alpha
<b>Gene Name</b>	IL10RA
<b>Cellular localization</b>	Cell membrane ; Single-pass type I membrane protein. Cytoplasm .
<b>Purification</b>	The antibody was affinity-purified from rabbit antiserum by affinity-chromatography using epitope-specific immunogen.
<b>Clonality</b>	Polyclonal

Explore. Bioreagents.

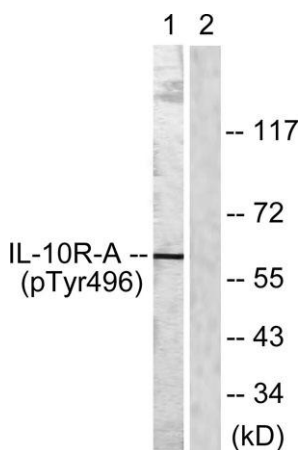
<b>Concentration</b>	1 mg/ml
<b>Observed band</b>	63kD
<b>Human Gene ID</b>	3587
<b>Human Swiss-Prot Number</b>	Q13651
<b>Alternative Names</b>	IL10RA; IL10R; Interleukin-10 receptor subunit alpha; IL-10 receptor subunit alpha; IL-10R subunit alpha; IL-10RA; CDw210a; Interleukin-10 receptor subunit 1; IL-10R subunit 1; IL-10R1; CD antigen CD210

**Background**

The protein encoded by this gene is a receptor for interleukin 10. This protein is structurally related to interferon receptors. It has been shown to mediate the immunosuppressive signal of interleukin 10, and thus inhibits the synthesis of proinflammatory cytokines. This receptor is reported to promote survival of progenitor myeloid cells through the insulin receptor substrate-2/PI 3-kinase/AKT pathway. Activation of this receptor leads to tyrosine phosphorylation of JAK1 and TYK2 kinases. Two transcript variants, one protein-coding and the other not protein-coding, have been found for this gene. [provided by RefSeq, Jan 2009],



**Enzyme-Linked Immunosorbent Assay (Phospho-ELISA) for Immunogen Phosphopeptide (Phospho-left) and Non-Phosphopeptide (Phospho-right), using IL-10R alpha (Phospho-Tyr496) Antibody**



**Western blot analysis of lysates from HUVEC cells, using IL-10R alpha (Phospho-Tyr496) Antibody. The lane on the right is blocked with the phospho peptide.**



Explore. Bioreagents.

[www.biorbyt.com](http://www.biorbyt.com)