

**IL-7R (phospho Tyr449) rabbit pAb****Cat#: orb768759 (Manual)**

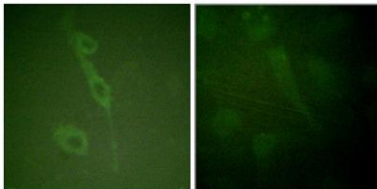
For research use only. Not intended for diagnostic use.

|                                 |  |
|---------------------------------|--|
| <b>Product Name</b>             | IL-7R (phospho Tyr449) rabbit pAb  |
| <b>Host species</b>             | Rabbit   |
| <b>Applications</b>             | WB;IF;ELISA  |
| <b>Species Cross-Reactivity</b> | Human;Mouse  |
| <b>Recommended dilutions</b>    | Western Blot: 1/500 - 1/2000. Immunofluorescence: 1/200 - 1/1000. ELISA: 1/10000. Not yet tested in other applications.                                    |
| <b>Immunogen</b>                | The antiserum was produced against synthesized peptide derived from human IL-7R/CD127 around the phosphorylation site of Tyr449. AA range:410-459          |
| <b>Specificity</b>              | Phospho-IL-7R (Y449) Polyclonal Antibody detects endogenous levels of IL-7R protein only when phosphorylated at Y449.                                      |
| <b>Formulation</b>              | Liquid in PBS containing 50% glycerol, 0.5% BSA and 0.02% sodium azide..   |
| <b>Storage</b>                  | Store at -20°C. Avoid repeated freeze-thaw cycles.   |
| <b>Protein Name</b>             | Interleukin-7 receptor subunit alpha   |
| <b>Gene Name</b>                | IL7R   |
| <b>Cellular localization</b>    | [Isoform 1]: Cell membrane; Single-pass type I membrane protein.; [Isoform 3]: Cell membrane; Single-pass type I membrane protein.; [Isoform 4]: Secreted. |
| <b>Purification</b>             | The antibody was affinity-purified from rabbit antiserum by affinity-chromatography using epitope-specific immunogen.                                      |

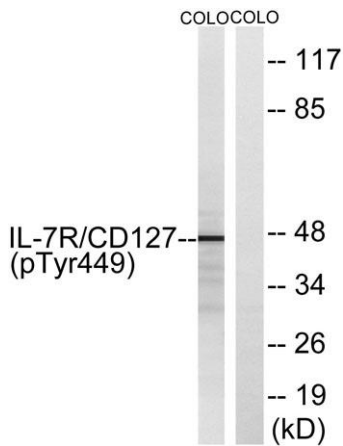
|                                |   |
|--------------------------------|---|
| <b>Clonality</b>               | Polyclonal  |
| <b>Concentration</b>           | 1 mg/ml   |
| <b>Observed band</b>           | 60kD  |
| <b>Human Gene ID</b>           | 3575  |
| <b>Human Swiss-Prot Number</b> | P16871  |
| <b>Alternative Names</b>       | IL7R; Interleukin-7 receptor subunit alpha; IL-7 receptor subunit alpha; IL-7R subunit alpha; IL-7R-alpha; IL-7RA; CDw127; CD antigen CD127 |

**Background**

The protein encoded by this gene is a receptor for interleukin 7 (IL7). The function of this receptor requires the interleukin 2 receptor, gamma chain (IL2RG), which is a common gamma chain shared by the receptors of various cytokines, including interleukins 2, 4, 7, 9, and 15. This protein has been shown to play a critical role in V(D)J recombination during lymphocyte development. Defects in this gene may be associated with severe combined immunodeficiency (SCID). Alternatively spliced transcript variants have been found. [provided by RefSeq, Dec 2015],



**Immunofluorescence analysis of HUVEC cells, using IL-7R/CD127 (Phospho-Tyr449) Antibody. The picture on the right is blocked with the phospho peptide.**



Western blot analysis of lysates from COLO205 cells, using IL-7R/CD127 (Phospho-Tyr449) Antibody. The lane on the right is blocked with the phospho peptide.