

**IL-2R $\alpha$  (phospho Ser268) rabbit pAb****Cat#: orb768745 (Manual)**

For research use only. Not intended for diagnostic use.

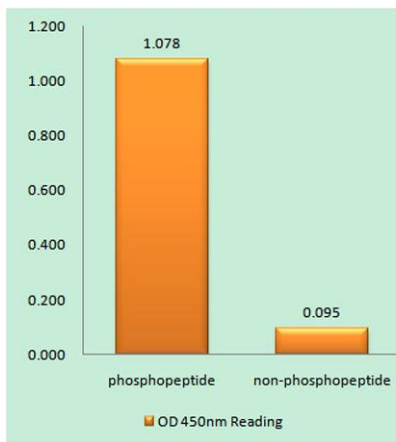
<b>Product Name</b>	IL-2R $\alpha$ (phospho Ser268) rabbit pAb
<b>Host species</b>	Rabbit
<b>Applications</b>	WB;IHC;IF;ELISA
<b>Species Cross-Reactivity</b>	Human;Rat;Mouse;
<b>Recommended dilutions</b>	Western Blot: 1/500 - 1/2000. Immunohistochemistry: 1/100 - 1/300. Immunofluorescence: 1/200 - 1/1000. ELISA: 1/10000. Not yet tested in other applications.
<b>Immunogen</b>	The antiserum was produced against synthesized peptide derived from human IL-2R alpha/CD25 around the phosphorylation site of Ser268. AA range:223-272
<b>Specificity</b>	Phospho-IL-2R $\alpha$ (S268) Polyclonal Antibody detects endogenous levels of IL-2R $\alpha$ protein only when phosphorylated at S268.
<b>Formulation</b>	Liquid in PBS containing 50% glycerol, 0.5% BSA and 0.02% sodium azide..
<b>Storage</b>	Store at -20°C. Avoid repeated freeze-thaw cycles.
<b>Protein Name</b>	Interleukin-2 receptor subunit alpha
<b>Gene Name</b>	IL2RA
<b>Cellular localization</b>	Membrane; Single-pass type I membrane protein.
<b>Purification</b>	The antibody was affinity-purified from rabbit antiserum by affinity-chromatography using epitope-specific immunogen.
<b>Clonality</b>	Polyclonal

Explore. Bioreagents.

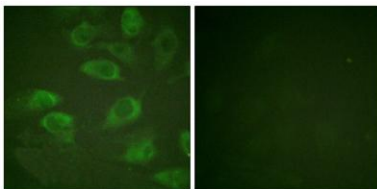
<b>Concentration</b>	1 mg/ml
<b>Observed band</b>	55kD
<b>Human Gene ID</b>	3559
<b>Human Swiss-Prot Number</b>	P01589
<b>Alternative Names</b>	IL2RA; Interleukin-2 receptor subunit alpha; IL-2 receptor subunit alpha; IL-2-RA; IL-2R subunit alpha; IL2-RA; TAC antigen; p55; CD antigen CD25

### Background

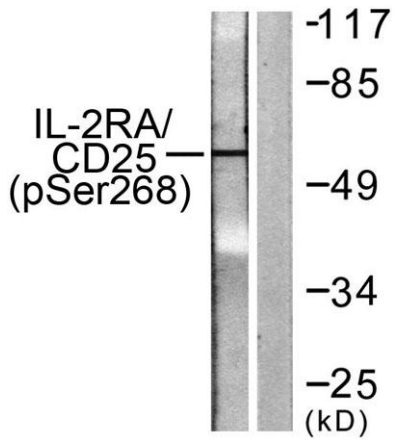
The interleukin 2 (IL2) receptor alpha (IL2RA) and beta (IL2RB) chains, together with the common gamma chain (IL2RG), constitute the high-affinity IL2 receptor. Homodimeric alpha chains (IL2RA) result in low-affinity receptor, while homodimeric beta (IL2RB) chains produce a medium-affinity receptor. Normally an integral-membrane protein, soluble IL2RA has been isolated and determined to result from extracellular proteolysis. Alternately-spliced IL2RA mRNAs have been isolated, but the significance of each is presently unknown. Mutations in this gene are associated with interleukin 2 receptor alpha deficiency.[provided by RefSeq, Nov 2009],



**Enzyme-Linked Immunosorbent Assay (Phospho-ELISA) for Immunogen Phosphopeptide (Phospho-left) and Non-Phosphopeptide (Phospho-right), using IL-2R alpha/CD25 (Phospho-Ser268) Antibody**



**Immunofluorescence analysis of HeLa cells, using IL-2R alpha/CD25 (Phospho-Ser268) Antibody. The picture on the right is blocked with the phospho peptide.**



Western blot analysis of lysates from LOVO cells, using IL-2R alpha/CD25 (Phospho-Ser268) Antibody. The lane on the right is blocked with the phospho peptide.