

IKK β (phospho Tyr199) rabbit pAb**Cat#: orb768741 (Manual)**

For research use only. Not intended for diagnostic use.

Product Name	IKK β (phospho Tyr199) rabbit pAb
Host species	Rabbit
Applications	WB;IHC;IF;ELISA
Species Cross-Reactivity	Human;Mouse;Rat
Recommended dilutions	Western Blot: 1/500 - 1/2000. Immunohistochemistry: 1/100 - 1/300. ELISA: 1/5000. Not yet tested in other applications.
Immunogen	The antiserum was produced against synthesized peptide derived from human IKK-beta around the phosphorylation site of Tyr199. AA range:166-215
Specificity	Phospho-IKK β (Y199) Polyclonal Antibody detects endogenous levels of IKK β protein only when phosphorylated at Y199.
Formulation	Liquid in PBS containing 50% glycerol, 0.5% BSA and 0.02% sodium azide..
Storage	Store at -20°C. Avoid repeated freeze-thaw cycles.
Protein Name	Inhibitor of nuclear factor kappa-B kinase subunit beta
Gene Name	IKBKB
Cellular localization	Cytoplasm . Nucleus . Membrane raft . Colocalized with DPP4 in membrane rafts. .
Purification	The antibody was affinity-purified from rabbit antiserum by affinity-chromatography using epitope-specific immunogen.
Clonality	Polyclonal

Concentration 1 mg/ml

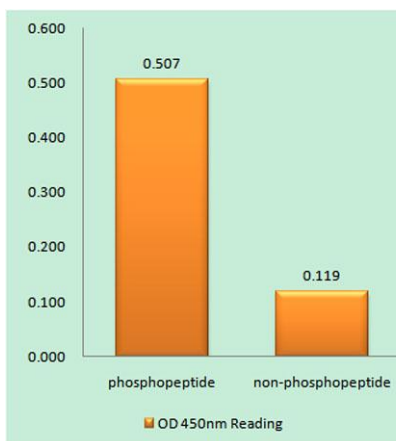
Observed band 85kD

Human Gene ID 3551

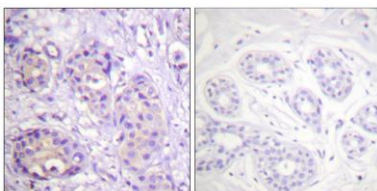
Human Swiss-Prot Number O14920

Alternative Names IKK β ; IKKB; Inhibitor of nuclear factor kappa-B kinase subunit beta; I-kappa-B-kinase beta; IKK-B; IKK-beta; I κ B β ; I-kappa-B kinase 2; IKK2; Nuclear factor NF-kappa-B inhibitor kinase beta; NFKB1KB

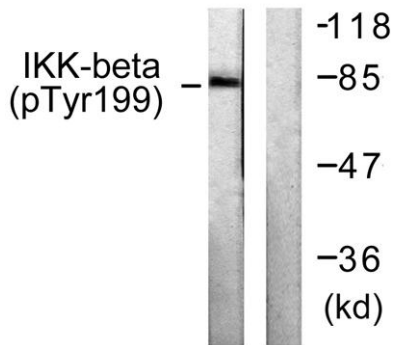
Background The protein encoded by this gene phosphorylates the inhibitor in the inhibitor/NF-kappa-B complex, causing dissociation of the inhibitor and activation of NF-kappa-B. The encoded protein itself is found in a complex of proteins. Several transcript variants, some protein-coding and some not, have been found for this gene. [provided by RefSeq, Sep 2011],



Enzyme-Linked Immunosorbent Assay (Phospho-ELISA) for Immunogen Phosphopeptide (Phospho-left) and Non-Phosphopeptide (Phospho-right), using IKK-beta (Phospho-Tyr199) Antibody



Immunohistochemistry analysis of paraffin-embedded human breast carcinoma, using IKK-beta (Phospho-Tyr199) Antibody. The picture on the right is blocked with the phospho peptide.



Western blot analysis of lysates from HeLa cells treated with TNF- α 20ng/ml+Calyculin A 50nM 5', using IKK-beta (Phospho-Tyr199) Antibody. The lane on the right is blocked with the phospho peptide.