

IGF-IIR (phospho Ser2409) rabbit pAb**Cat#: orb768727 (Manual)**

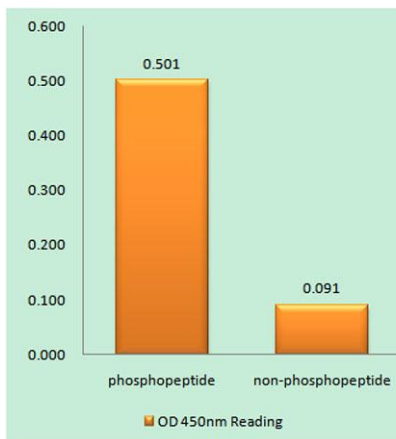
For research use only. Not intended for diagnostic use.

Product Name	IGF-IIR (phospho Ser2409) rabbit pAb
Host species	Rabbit
Applications	WB;IHC;IF;ELISA
Species Cross-Reactivity	Human;Mouse;Monkey
Recommended dilutions	Western Blot: 1/500 - 1/2000. Immunohistochemistry: 1/100 - 1/300. ELISA: 1/10000. Not yet tested in other applications.
Immunogen	The antiserum was produced against synthesized peptide derived from human IGF2R around the phosphorylation site of Ser2409. AA range:2381-2430
Specificity	Phospho-IGF-IIR (S2409) Polyclonal Antibody detects endogenous levels of IGF-IIR protein only when phosphorylated at S2409.
Formulation	Liquid in PBS containing 50% glycerol, 0.5% BSA and 0.02% sodium azide..
Storage	Store at -20°C. Avoid repeated freeze-thaw cycles.
Protein Name	Cation-independent mannose-6-phosphate receptor
Gene Name	IGF2R
Cellular localization	Golgi apparatus membrane ; Single-pass type I membrane protein . Endosome membrane ; Single-pass type I membrane protein . Mainly localized in the Golgi at steady state and not detectable in lysosome (PubMed:18817523). Colocalized with DPP4 in internalized cytoplasmic vesicles adjacent to the cell surface (PubMed:10900005). .
Purification	The antibody was affinity-purified from rabbit antiserum by affinity-chromatography using epitope-specific immunogen.

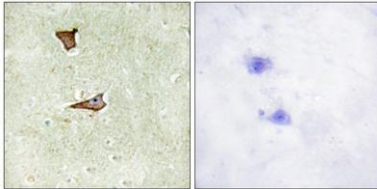
Clonality	Polyclonal
Concentration	1 mg/ml
Observed band	300kD
Human Gene ID	3482
Human Swiss-Prot Number	P11717
Alternative Names	IGF2R; MPRI; Cation-independent mannose-6-phosphate receptor; CI Man-6-P receptor; CI-MPR; M6PR; 300 kDa mannose 6-phosphate receptor; MPR 300; Insulin-like growth factor 2 receptor; Insulin-like growth factor II receptor; IGF-II receptor;

Background

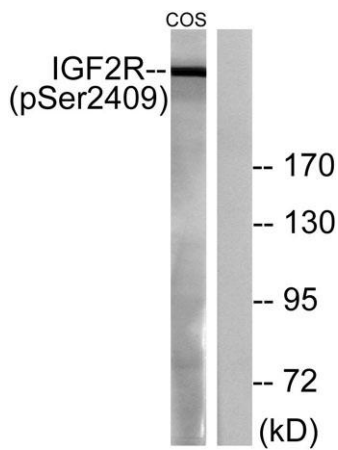
This gene encodes a receptor for both insulin-like growth factor 2 and mannose 6-phosphate. The binding sites for each ligand are located on different segments of the protein. This receptor has various functions, including in the intracellular trafficking of lysosomal enzymes, the activation of transforming growth factor beta, and the degradation of insulin-like growth factor 2. Mutation or loss of heterozygosity of this gene has been associated with risk of hepatocellular carcinoma. The orthologous mouse gene is imprinted and shows exclusive expression from the maternal allele; however, imprinting of the human gene may be polymorphic, as only a minority of individuals showed biased expression from the maternal allele (PMID:8267611). [provided by RefSeq, Nov 2015],



Enzyme-Linked Immunosorbent Assay (Phospho-ELISA) for Immunogen Phosphopeptide (Phospho-left) and Non-Phosphopeptide (Phospho-right), using IGF2R (Phospho-Ser2409) Antibody



Immunohistochemistry analysis of paraffin-embedded human brain, using IGF2R (Phospho-Ser2409) Antibody. The picture on the right is blocked with the phospho peptide.



Western blot analysis of lysates from COS7 cells treated with UV 15', using IGF2R (Phospho-Ser2409) Antibody. The lane on the right is blocked with the phospho peptide.