

IFN- γ R α (phospho Tyr457) rabbit pAb**Cat#: orb768713 (Manual)**

For research use only. Not intended for diagnostic use.

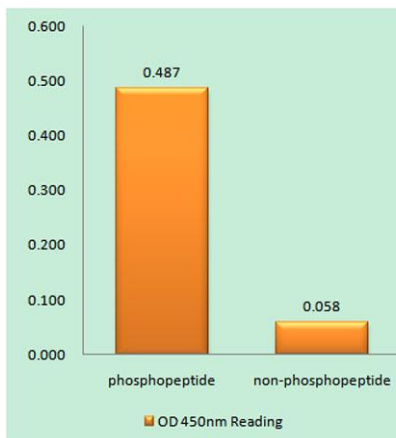
Product Name	IFN- γ R α (phospho Tyr457) rabbit pAb
Host species	Rabbit
Applications	WB;IHC;IF;ELISA
Species Cross-Reactivity	Human;Mouse;Rat;Monkey
Recommended dilutions	Western Blot: 1/500 - 1/2000. Immunohistochemistry: 1/100 - 1/300. Immunofluorescence: 1/200 - 1/1000. ELISA: 1/20000. Not yet tested in other applications.
Immunogen	The antiserum was produced against synthesized peptide derived from human Interferon-gamma Receptor alpha around the phosphorylation site of Tyr457. AA range:431-480
Specificity	Phospho-IFN- γ R α (Y457) Polyclonal Antibody detects endogenous levels of IFN- γ R α protein only when phosphorylated at Y457.
Formulation	Liquid in PBS containing 50% glycerol, 0.5% BSA and 0.02% sodium azide..
Storage	Store at -20°C. Avoid repeated freeze-thaw cycles.
Protein Name	Interferon gamma receptor 1
Gene Name	IFNGR1
Cellular localization	Cell membrane ; Single-pass type I membrane protein .
Purification	The antibody was affinity-purified from rabbit antiserum by affinity-chromatography using epitope-specific immunogen.
Clonality	Polyclonal

Explore. Bioreagents.

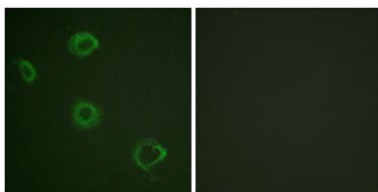
Concentration	1 mg/ml
Observed band	83kD
Human Gene ID	3459
Human Swiss-Prot Number	P15260
Alternative Names	IFNGR1; Interferon gamma receptor 1; IFN-gamma receptor 1; IFN-gamma-R1; CDw119; CD antigen CD119

Background

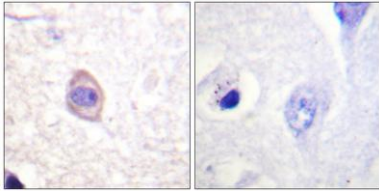
This gene (IFNGR1) encodes the ligand-binding chain (alpha) of the gamma interferon receptor. Human interferon-gamma receptor is a heterodimer of IFNGR1 and IFNGR2. A genetic variation in IFNGR1 is associated with susceptibility to *Helicobacter pylori* infection. In addition, defects in IFNGR1 are a cause of mendelian susceptibility to mycobacterial disease, also known as familial disseminated atypical mycobacterial infection. [provided by RefSeq, Jul 2008],



Enzyme-Linked Immunosorbent Assay (Phospho-ELISA) for Immunogen Phosphopeptide (Phospho-left) and Non-Phosphopeptide (Phospho-right), using Interferon-gamma Receptor alpha (Phospho-Tyr457) Antibody



Immunofluorescence analysis of A549 cells, using Interferon-gamma Receptor alpha (Phospho-Tyr457) Antibody. The picture on the right is blocked with the phospho peptide.



Immunohistochemistry analysis of paraffin-embedded human brain, using Interferon-gamma Receptor alpha (Phospho-Tyr457) Antibody. The picture on the right is blocked with the phospho peptide.

Interferon- γ receptor α chain precursor (pTyr457)

Western blot analysis of lysates from COS7 cells, using Interferon-gamma Receptor alpha (Phospho-Tyr457) Antibody. The lane on the right is blocked with the phospho peptide.