

IFN- α / β R α (phospho Tyr466) rabbit pAb**Cat#: orb768711 (Manual)**

For research use only. Not intended for diagnostic use.

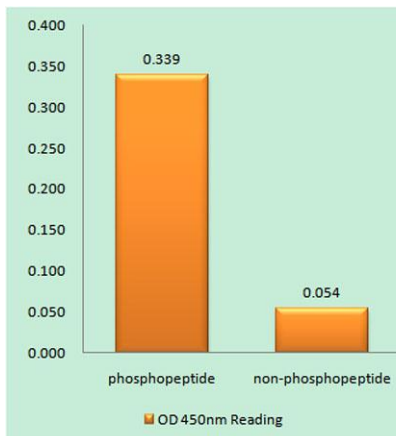
Product Name	IFN- α / β R α (phospho Tyr466) rabbit pAb
Host species	Rabbit
Applications	WB;IHC;IF;ELISA
Species Cross-Reactivity	Human;Rat;Mouse;
Recommended dilutions	Western Blot: 1/500 - 1/2000. Immunohistochemistry: 1/100 - 1/300. ELISA: 1/10000. Not yet tested in other applications.
Immunogen	The antiserum was produced against synthesized peptide derived from human Interferon-alpha/beta Receptor alpha around the phosphorylation site of Tyr466. AA range:436-485
Specificity	Phospho-IFN- α / β R α (Y466) Polyclonal Antibody detects endogenous levels of IFN- α / β R α protein only when phosphorylated at Y466.
Formulation	Liquid in PBS containing 50% glycerol, 0.5% BSA and 0.02% sodium azide..
Storage	Store at -20°C. Avoid repeated freeze-thaw cycles.
Protein Name	Interferon alpha/beta receptor 1
Gene Name	IFNAR1
Cellular localization	[Isoform 1]: Cell membrane ; Single-pass type I membrane protein . Late endosome . Lysosome . Interferon binding triggers internalization of the receptor from the cell membrane into endosomes and then into lysosomes. .
Purification	The antibody was affinity-purified from rabbit antiserum by affinity-chromatography using epitope-specific immunogen.

Explore. Bioreagents.

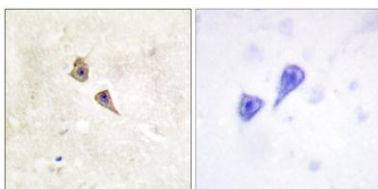
Clonality	Polyclonal
Concentration	1 mg/ml
Observed band	63kD
Human Gene ID	3454
Human Swiss-Prot Number	P17181
Alternative Names	IFNAR1; IFNAR; Interferon alpha/beta receptor 1; IFN-R-1; IFN-alpha/beta receptor 1; Cytokine receptor class-II member 1; Cytokine receptor family 2 member 1; CRF2-1; Type I interferon receptor 1

Background

The protein encoded by this gene is a type I membrane protein that forms one of the two chains of a receptor for interferons alpha and beta. Binding and activation of the receptor stimulates Janus protein kinases, which in turn phosphorylate several proteins, including STAT1 and STAT2. The encoded protein also functions as an antiviral factor. [provided by RefSeq, Jul 2008],



Enzyme-Linked Immunosorbent Assay (Phospho-ELISA) for Immunogen Phosphopeptide (Phospho-left) and Non-Phosphopeptide (Phospho-right), using Interferon-alpha/beta Receptor alpha (Phospho-Tyr466) Antibody



Immunohistochemistry analysis of paraffin-embedded human brain, using Interferon-alpha/beta Receptor alpha (Phospho-Tyr466) Antibody. The picture on the right is blocked with the phospho peptide.



Explore. Bioreagents.

www.biorbyt.com