

CD50 (phospho Ser518) rabbit pAb**Cat#: orb768685 (Manual)**

For research use only. Not intended for diagnostic use.

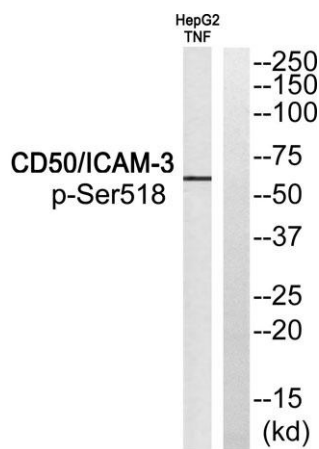
Product Name	CD50 (phospho Ser518) rabbit pAb
Host species	Rabbit
Applications	WB;ELISA
Species Cross-Reactivity	Human;Rat;Mouse;
Recommended dilutions	Western Blot: 1/500 - 1/2000. ELISA: 1/40000. Not yet tested in other applications.
Immunogen	The antiserum was produced against synthesized peptide derived from human CD50/ICAM-3 around the phosphorylation site of Ser518. AA range:484-533
Specificity	Phospho-CD50 (S518) Polyclonal Antibody detects endogenous levels of CD50 protein only when phosphorylated at S518.
Formulation	Liquid in PBS containing 50% glycerol, 0.5% BSA and 0.02% sodium azide..
Storage	Store at -20°C. Avoid repeated freeze-thaw cycles.
Protein Name	Intercellular adhesion molecule 3
Gene Name	ICAM3
Cellular localization	Membrane; Single-pass type I membrane protein.
Purification	The antibody was affinity-purified from rabbit antiserum by affinity-chromatography using epitope-specific immunogen.
Clonality	Polyclonal

Explore. Bioreagents.

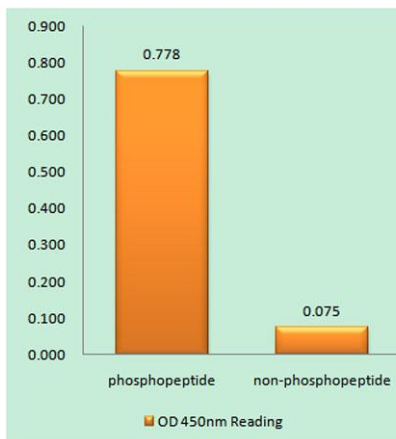
Concentration	1 mg/ml
Observed band	42-60kD
Human Gene ID	3385
Human Swiss-Prot Number	P32942
Alternative Names	ICAM3; Intercellular adhesion molecule 3; ICAM-3; CDw50; ICAM-R; CD antigen CD50

Background

The protein encoded by this gene is a member of the intercellular adhesion molecule (ICAM) family. All ICAM proteins are type I transmembrane glycoproteins, contain 2-9 immunoglobulin-like C2-type domains, and bind to the leukocyte adhesion LFA-1 protein. This protein is constitutively and abundantly expressed by all leucocytes and may be the most important ligand for LFA-1 in the initiation of the immune response. It functions not only as an adhesion molecule, but also as a potent signalling molecule. Alternative splicing results in multiple transcript variants encoding different isoforms. [provided by RefSeq, Feb 2016],



Western blot analysis of CD50/ICAM-3 (Phospho-Ser518) Antibody. The lane on the right is blocked with the CD50/ICAM-3 (Phospho-Ser518) peptide.



Enzyme-Linked Immunosorbent Assay (Phospho-ELISA) for Immunogen Phosphopeptide (Phospho-left) and Non-Phosphopeptide (Phospho-right), using CD50/ICAM-3 (Phospho-Ser518) Antibody



Explore. Bioreagents.

www.biorbyt.com