

**HSF1 (phospho Ser307) rabbit pAb****Cat#: orb768656 (Manual)**

For research use only. Not intended for diagnostic use.

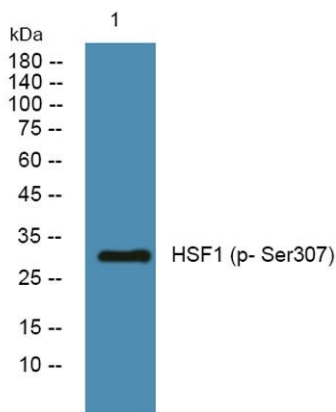
<b>Product Name</b>	HSF1 (phospho Ser307) rabbit pAb
<b>Host species</b>	Rabbit
<b>Applications</b>	WB;IF;ELISA
<b>Species Cross-Reactivity</b>	Human;Rat;Mouse;
<b>Recommended dilutions</b>	Western Blot: 1/500 - 1/2000. Immunofluorescence: 1/200 - 1/1000. ELISA: 1/5000. Not yet tested in other applications.
<b>Immunogen</b>	The antiserum was produced against synthesized peptide derived from human HSF1 around the phosphorylation site of Ser307. AA range:273-322
<b>Specificity</b>	Phospho-HSF1 (S307) Polyclonal Antibody detects endogenous levels of HSF1 protein only when phosphorylated at S307.
<b>Formulation</b>	Liquid in PBS containing 50% glycerol, 0.5% BSA and 0.02% sodium azide..
<b>Storage</b>	Store at -20°C. Avoid repeated freeze-thaw cycles.
<b>Protein Name</b>	Heat shock factor protein 1
<b>Gene Name</b>	HSF1
<b>Cellular localization</b>	Nucleus . Cytoplasm . Nucleus, nucleoplasm . Cytoplasm, perinuclear region . Cytoplasm, cytoskeleton, spindle pole . Cytoplasm, cytoskeleton, microtubule organizing center, centrosome . Chromosome, centromere, kinetochore . The monomeric form is cytoplasmic in unstressed cells (PubMed:8455624, PubMed:26159920). Predominantly nuclear protein in both unstressed and heat shocked cells (PubMed:10413683, PubMed:10359787). Translocates in the nucleus upon heat shock (PubMed:8455624). Nucleocytoplasmic shuttling protein (PubMed:26159920). Colocalizes with IER5 in the nucleus (PubMed:27354066). Colocalizes with BAG3 to the nucleus upon heat stress (PubMed:8455624, PubMed:26159920). Localizes in subnuclear granules

called nuclear stress bodies (nSBs) upon heat shock (PubMed:11447121, PubMed:1151455)

<b>Purification</b>	The antibody was affinity-purified from rabbit antiserum by affinity-chromatography using epitope-specific immunogen.
<b>Clonality</b>	Polyclonal
<b>Concentration</b>	1 mg/ml
<b>Observed band</b>	30kD
<b>Human Gene ID</b>	3297
<b>Human Swiss-Prot Number</b>	Q00613
<b>Alternative Names</b>	HSF1; HSTF1; Heat shock factor protein 1; HSF 1; Heat shock transcription factor 1; HSTF 1

## Background

heat shock transcription factor 1(HSF1) Homo sapiens The product of this gene is a transcription factor that is rapidly induced after temperature stress and binds heat shock promoter elements (HSE). This protein plays a role in the regulation of lifespan. Expression of this gene is repressed by phosphorylation, which promotes binding by heat shock protein 90. [provided by RefSeq, Aug 2016],



Western blot analysis of lysates from A431 cells, primary antibody was diluted at 1:1000, 4<sup>o</sup>over night