

**HSF1 (phospho Thr142) rabbit pAb****Cat#: orb768655 (Manual)**

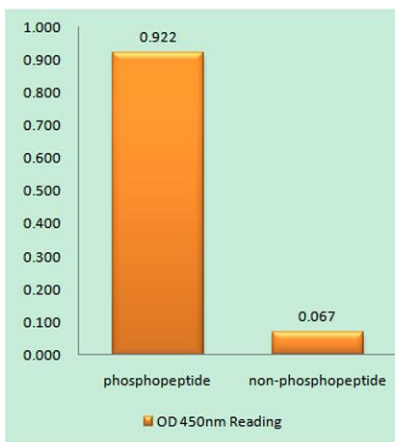
For research use only. Not intended for diagnostic use.

|                                 |   |
|---------------------------------|---|
| <b>Product Name</b>             | HSF1 (phospho Thr142) rabbit pAb  |
| <b>Host species</b>             | Rabbit  |
| <b>Applications</b>             | IHC;IF;ELISA  |
| <b>Species Cross-Reactivity</b> | Human;Mouse   |
| <b>Recommended dilutions</b>    | Immunohistochemistry: 1/100 - 1/300. ELISA: 1/20000. Not yet tested in other applications.  |
| <b>Immunogen</b>                | The antiserum was produced against synthesized peptide derived from human HSF1 around the phosphorylation site of Thr142. AA range:108-157  |
| <b>Specificity</b>              | Phospho-HSF1 (T142) Polyclonal Antibody detects endogenous levels of HSF1 protein only when phosphorylated at T142.   |
| <b>Formulation</b>              | Liquid in PBS containing 50% glycerol, 0.5% BSA and 0.02% sodium azide..  |
| <b>Storage</b>                  | Store at -20°C. Avoid repeated freeze-thaw cycles.  |
| <b>Protein Name</b>             | Heat shock factor protein 1   |
| <b>Gene Name</b>                | HSF1  |
| <b>Cellular localization</b>    | Nucleus . Cytoplasm . Nucleus, nucleoplasm . Cytoplasm, perinuclear region . Cytoplasm, cytoskeleton, spindle pole . Cytoplasm, cytoskeleton, microtubule organizing center, centrosome . Chromosome, centromere, kinetochore . The monomeric form is cytoplasm |
| <b>Purification</b>             | The antibody was affinity-purified from rabbit antiserum by affinity-chromatography using epitope-specific immunogen.   |

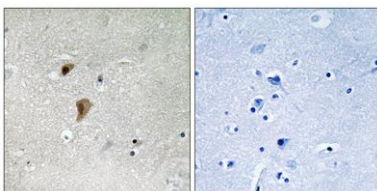
|                                |  |
|--------------------------------|--|
| <b>Clonality</b>               | Polyclonal   |
| <b>Concentration</b>           | 1 mg/ml  |
| <b>Observed band</b>           |  |
| <b>Human Gene ID</b>           | 3297   |
| <b>Human Swiss-Prot Number</b> | Q00613   |
| <b>Alternative Names</b>       | HSF1; HSTF1; Heat shock factor protein 1; HSF 1; Heat shock transcription factor 1; HSTF 1 |

**Background**

heat shock transcription factor 1(HSF1) Homo sapiens The product of this gene is a transcription factor that is rapidly induced after temperature stress and binds heat shock promoter elements (HSE). This protein plays a role in the regulation of lifespan. Expression of this gene is repressed by phosphorylation, which promotes binding by heat shock protein 90. [provided by RefSeq, Aug 2016],



**Enzyme-Linked Immunosorbent Assay (Phospho-ELISA) for Immunogen Phosphopeptide (Phospho-left) and Non-Phosphopeptide (Phospho-right), using HSF1 (Phospho-Thr142) Antibody**



**Immunohistochemistry analysis of paraffin-embedded human brain, using HSF1 (Phospho-Thr142) Antibody. The picture on the right is blocked with the phosphopeptide.**



Explore. Bioreagents.

[www.biorbyt.com](http://www.biorbyt.com)