

HSF1 (phospho Ser121) rabbit pAb**Cat#: orb768654 (Manual)**

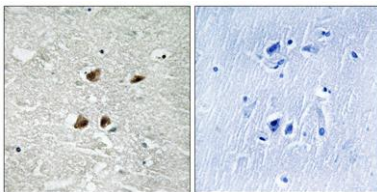
For research use only. Not intended for diagnostic use.

Product Name	HSF1 (phospho Ser121) rabbit pAb
Host species	Rabbit
Applications	WB;IHC;IF;ELISA
Species Cross-Reactivity	Human;Mouse
Recommended dilutions	Western Blot: 1/500 - 1/2000. Immunohistochemistry: 1/100 - 1/300. ELISA: 1/20000. Not yet tested in other applications.
Immunogen	The antiserum was produced against synthesized peptide derived from human HSF1 around the phosphorylation site of Ser121. AA range:87-136
Specificity	Phospho-HSF1 (S121) Polyclonal Antibody detects endogenous levels of HSF1 protein only when phosphorylated at S121.
Formulation	Liquid in PBS containing 50% glycerol, 0.5% BSA and 0.02% sodium azide..
Storage	Store at -20°C. Avoid repeated freeze-thaw cycles.
Protein Name	Heat shock factor protein 1
Gene Name	HSF1
Cellular localization	Nucleus . Cytoplasm . Nucleus, nucleoplasm . Cytoplasm, perinuclear region . Cytoplasm, cytoskeleton, spindle pole . Cytoplasm, cytoskeleton, microtubule organizing center, centrosome . Chromosome, centromere, kinetochore . The monomeric form is cytoplasm
Purification	The antibody was affinity-purified from rabbit antiserum by affinity-chromatography using epitope-specific immunogen.

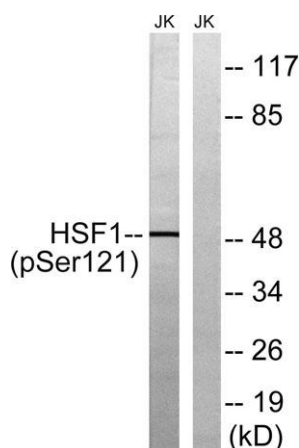
Clonality	Polyclonal
Concentration	1 mg/ml
Observed band	50kD
Human Gene ID	3297
Human Swiss-Prot Number	Q00613
Alternative Names	HSF1; HSTF1; Heat shock factor protein 1; HSF 1; Heat shock transcription factor 1; HSTF 1

Background

heat shock transcription factor 1(HSF1) Homo sapiens The product of this gene is a transcription factor that is rapidly induced after temperature stress and binds heat shock promoter elements (HSE). This protein plays a role in the regulation of lifespan. Expression of this gene is repressed by phosphorylation, which promotes binding by heat shock protein 90. [provided by RefSeq, Aug 2016],



Immunohistochemistry analysis of paraffin-embedded human brain, using HSF1 (Phospho-Ser121) Antibody. The picture on the right is blocked with the phospho peptide.



Western blot analysis of lysates from Jurkat cells treated with TNF 2500U/ML 30', using HSF1 (Phospho-Ser121) Antibody. The lane on the right is blocked with the phospho peptide.



Explore. Bioreagents.

www.biorbyt.com