

Rab 37 rabbit pAb**Cat#: orb768649 (Manual)**

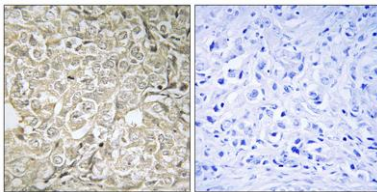
For research use only. Not intended for diagnostic use.

Product Name	Rab 37 rabbit pAb
Host species	Rabbit
Applications	WB;IHC;IF;ELISA
Species Cross-Reactivity	Human;Rat;Mouse;
Recommended dilutions	Western Blot: 1/500 - 1/2000. Immunohistochemistry: 1/100 - 1/300. ELISA: 1/5000. Not yet tested in other applications.
Immunogen	The antiserum was produced against synthesized peptide derived from human RAB37. AA range:170-219
Specificity	Rab 37 Polyclonal Antibody detects endogenous levels of Rab 37 protein.
Formulation	Liquid in PBS containing 50% glycerol, 0.5% BSA and 0.02% sodium azide..
Storage	Store at -20°C. Avoid repeated freeze-thaw cycles.
Protein Name	Ras-related protein Rab-37
Gene Name	RAB37
Cellular localization	Cytoplasmic vesicle. Secretory granules. .
Purification	The antibody was affinity-purified from rabbit antiserum by affinity-chromatography using epitope-specific immunogen.
Clonality	Polyclonal

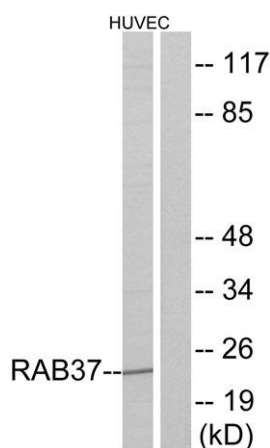
Concentration	1 mg/ml
Observed band	26kD
Human Gene ID	326624
Human Swiss-Prot Number	Q96AX2
Alternative Names	RAB37; Ras-related protein Rab-37

Background

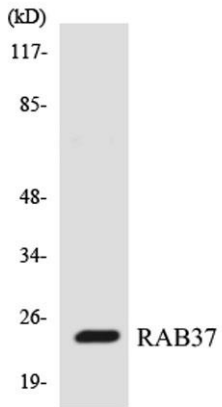
Rab proteins are low molecular mass GTPases that are critical regulators of vesicle trafficking. For additional background information on Rab proteins, see MIM 179508.[supplied by OMIM, Apr 2006],



Immunohistochemistry analysis of paraffin-embedded human prostate carcinoma tissue, using RAB37 Antibody. The picture on the right is blocked with the synthesized peptide.



Western blot analysis of lysates from HUVEC cells, using RAB37 Antibody. The lane on the right is blocked with the synthesized peptide.



Western blot analysis of the lysates from HepG2 cells using RAB37 antibody.