

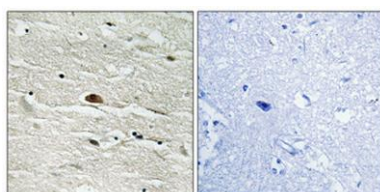
HMG-14 (phospho Ser21) rabbit pAb**Cat#: orb768618 (Manual)**

For research use only. Not intended for diagnostic use.

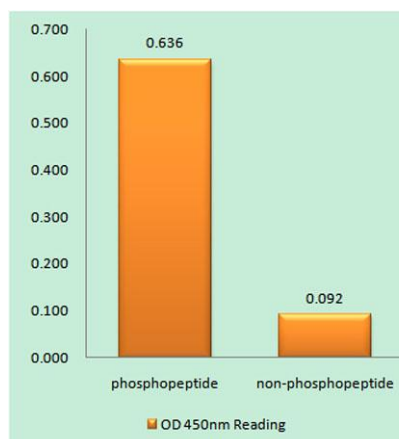
Product Name	HMG-14 (phospho Ser21) rabbit pAb
Host species	Rabbit
Applications	IHC;IF;ELISA
Species Cross-Reactivity	Human;Mouse;Rat
Recommended dilutions	Immunohistochemistry: 1/100 - 1/300. Immunofluorescence: 1/200 - 1/1000. ELISA: 1/10000. Not yet tested in other applications.
Immunogen	The antiserum was produced against synthesized peptide derived from human HMG14 around the phosphorylation site of Ser21. AA range:10-59
Specificity	Phospho-HMG-14 (S21) Polyclonal Antibody detects endogenous levels of HMG-14 protein only when phosphorylated at S21.
Formulation	Liquid in PBS containing 50% glycerol, 0.5% BSA and 0.02% sodium azide..
Storage	Store at -20°C. Avoid repeated freeze-thaw cycles.
Protein Name	Non-histone chromosomal protein HMG-14
Gene Name	HMGN1
Cellular localization	Nucleus. Cytoplasm. Cytoplasmic enrichment upon phosphorylation. The RNA edited version localizes to the nucleus.
Purification	The antibody was affinity-purified from rabbit antiserum by affinity-chromatography using epitope-specific immunogen.
Clonality	Polyclonal

Concentration	1 mg/ml
Observed band	
Human Gene ID	3150
Human Swiss-Prot Number	P05114
Alternative Names	HMGN1; HMG14; Non-histone chromosomal protein HMG-14; High mobility group nucleosome-binding domain-containing protein 1

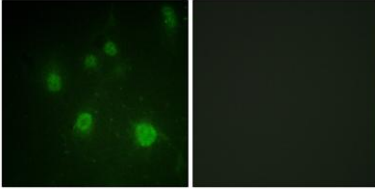
Background The protein encoded by this gene binds nucleosomal DNA and is associated with transcriptionally active chromatin. Along with a similar protein, HMG17, the encoded protein may help maintain an open chromatin configuration around transcribable genes. [provided by RefSeq, Aug 2011],



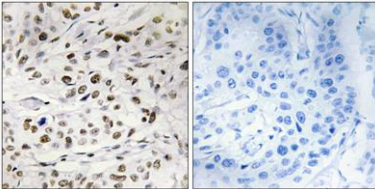
Immunohistochemical analysis of paraffin-embedded Human brain. Antibody was diluted at 1:100(4° overnight). High-pressure and temperature Tris-EDTA,pH8.0 was used for antigen retrieval. Negative ctrl (right) obtained from antibody was pre-absorbed by immunogen peptide.



Enzyme-Linked Immunosorbent Assay (Phospho-ELISA) for Immunogen Phosphopeptide (Phospho-left) and Non-Phosphopeptide (Phospho-right), using HMG14 (Phospho-Ser21) Antibody



Immunofluorescence analysis of COS7 cells, using HMG14 (Phospho-Ser21) Antibody. The picture on the right is blocked with the phospho peptide.



Immunohistochemistry analysis of paraffin-embedded human breast carcinoma, using HMG14 (Phospho-Ser21) Antibody. The picture on the right is blocked with the phospho peptide.