

ZIP2 rabbit pAb**Cat#: orb768580 (Manual)**

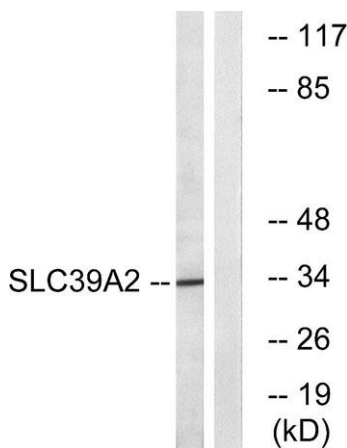
For research use only. Not intended for diagnostic use.

Product Name	ZIP2 rabbit pAb
Host species	Rabbit
Applications	WB;ELISA
Species Cross-Reactivity	Human;Rat;Mouse;
Recommended dilutions	Western Blot: 1/500 - 1/2000. ELISA: 1/10000. Not yet tested in other applications.
Immunogen	The antiserum was produced against synthesized peptide derived from human SLC39A2. AA range:11-60
Specificity	ZIP2 Polyclonal Antibody detects endogenous levels of ZIP2 protein.
Formulation	Liquid in PBS containing 50% glycerol, 0.5% BSA and 0.02% sodium azide..
Storage	Store at -20°C. Avoid repeated freeze-thaw cycles.
Protein Name	Zinc transporter ZIP2
Gene Name	SLC39A2
Cellular localization	Cell membrane; Multi-pass membrane protein.
Purification	The antibody was affinity-purified from rabbit antiserum by affinity-chromatography using epitope-specific immunogen.
Clonality	Polyclonal

Concentration	1 mg/ml
Observed band	36kD
Human Gene ID	29986
Human Swiss-Prot Number	Q9NP94
Alternative Names	SLC39A2; ZIP2; Zinc transporter ZIP2; 6A1; Eti-1; Solute carrier family 39 member 2; Zrt- and Irt-like protein 2; ZIP-2; hZIP2

Background

This gene encodes a member of the ZIP family of metal ion transporters. The encoded protein functions as a zinc transporter. Mutations in this gene may be associated with susceptibility to carotid artery disease. Multiple transcript variants have been described. [provided by RefSeq, Mar 2010],



Western blot analysis of lysates from Jurkat cells, using SLC39A2 Antibody. The lane on the right is blocked with the synthesized peptide.