

Glycogen Synthase 1 (phospho Ser645) rabbit pAb**Cat#: orb768577 (Manual)**

For research use only. Not intended for diagnostic use.

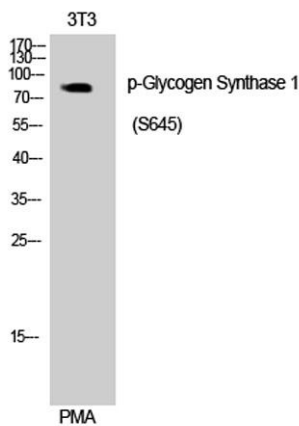
Product Name	Glycogen Synthase 1 (phospho Ser645) rabbit pAb
Host species	Rabbit
Applications	WB;IHC;IF;ELISA
Species Cross-Reactivity	Human;Mouse;Rat
Recommended dilutions	Western Blot: 1/500 - 1/2000. Immunohistochemistry: 1/100 - 1/300. ELISA: 1/5000. Not yet tested in other applications.
Immunogen	The antiserum was produced against synthesized peptide derived from human Glycogen Synthase around the phosphorylation site of Ser645. AA range:611-660
Specificity	Phospho-Glycogen Synthase 1 (S645) Polyclonal Antibody detects endogenous levels of Glycogen Synthase 1 protein only when phosphorylated at S645.
Formulation	Liquid in PBS containing 50% glycerol, 0.5% BSA and 0.02% sodium azide..
Storage	Store at -20°C. Avoid repeated freeze-thaw cycles.
Protein Name	Glycogen [starch] synthase muscle
Gene Name	GYS1
Cellular localization	cytosol,membrane,inclusion body,
Purification	The antibody was affinity-purified from rabbit antiserum by affinity-chromatography using epitope-specific immunogen.
Clonality	Polyclonal

Explore. Bioreagents.

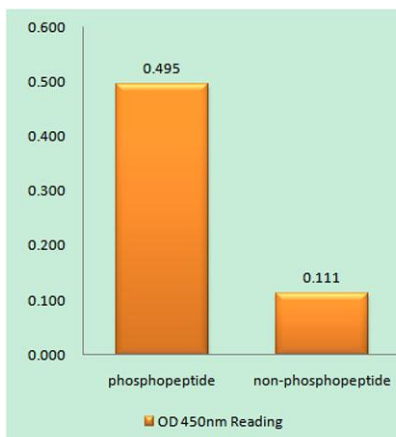
Concentration	1 mg/ml
Observed band	83kD
Human Gene ID	2997
Human Swiss-Prot Number	P13807
Alternative Names	GYS1; GYS; Glycogen [starch] synthase; muscle

Background

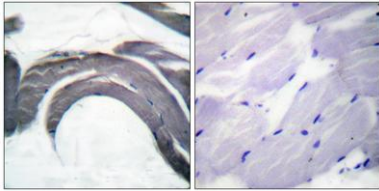
The protein encoded by this gene catalyzes the addition of glucose monomers to the growing glycogen molecule through the formation of alpha-1,4-glycoside linkages. Mutations in this gene are associated with muscle glycogen storage disease. Alternatively spliced transcript variants encoding different isoforms have been found for this gene.[provided by RefSeq, Sep 2009],



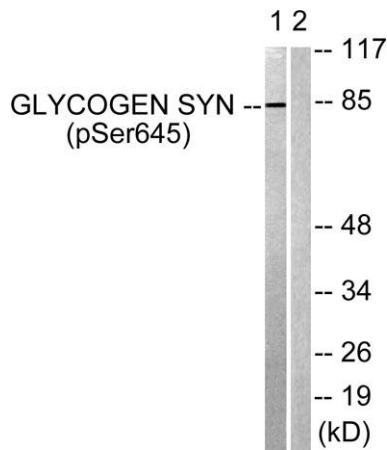
Western Blot analysis of 293 cells using Phospho-Glycogen Synthase 1 (S645) Polyclonal Antibody



Enzyme-Linked Immunosorbent Assay (Phospho-ELISA) for Immunogen Phosphopeptide (Phospho-left) and Non-Phosphopeptide (Phospho-right), using Glycogen Synthase (Phospho-Ser645) Antibody



Immunohistochemistry analysis of paraffin-embedded human skeletal muscle, using Glycogen Synthase (Phospho-Ser645) Antibody. The picture on the right is blocked with the phospho peptide.



Western blot analysis of lysates from NIH/3T3 cells treated with PMA 125ng/ml 30', using Glycogen Synthase (Phospho-Ser645) Antibody. The lane on the right is blocked with the phospho peptide.