

BLNK (phospho Tyr96) rabbit pAb**Cat#: orb768567 (Manual)**

For research use only. Not intended for diagnostic use.

Product Name	BLNK (phospho Tyr96) rabbit pAb
Host species	Rabbit
Applications	WB;IHC;IF;ELISA
Species Cross-Reactivity	Human;Mouse;Monkey
Recommended dilutions	Western Blot: 1/500 - 1/2000. Immunohistochemistry: 1/100 - 1/300. ELISA: 1/20000. Not yet tested in other applications.
Immunogen	The antiserum was produced against synthesized peptide derived from human BLNK around the phosphorylation site of Tyr96. AA range:62-111
Specificity	Phospho-BLNK (Y96) Polyclonal Antibody detects endogenous levels of BLNK protein only when phosphorylated at Y96.
Formulation	Liquid in PBS containing 50% glycerol, 0.5% BSA and 0.02% sodium azide..
Storage	Store at -20°C. Avoid repeated freeze-thaw cycles.
Protein Name	B-cell linker protein
Gene Name	BLNK
Cellular localization	Cytoplasm . Cell membrane . BCR activation results in the translocation to membrane fraction.
Purification	The antibody was affinity-purified from rabbit antiserum by affinity-chromatography using epitope-specific immunogen.
Clonality	Polyclonal

Concentration 1 mg/ml

Observed band 50kD

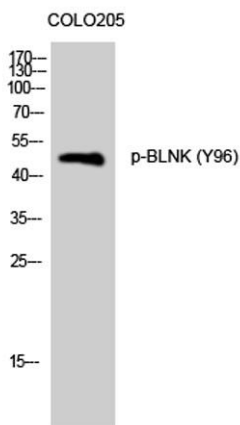
Human Gene ID 29760

Human Swiss-Prot Number Q8WV28

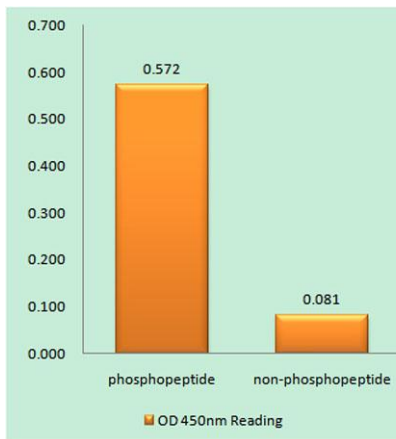
Alternative Names BLNK; BASH; SLP65; B-cell linker protein; B-cell adapter containing a SH2 domain protein; B-cell adapter containing a Src homology 2 domain protein; Cytoplasmic adapter protein; Src homology 2 domain-containing leukocyte protein of 65 kDa;

Background

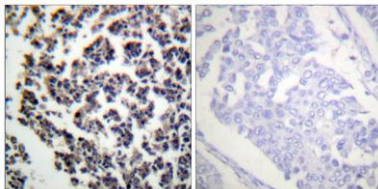
This gene encodes a cytoplasmic linker or adaptor protein that plays a critical role in B cell development. This protein bridges B cell receptor-associated kinase activation with downstream signaling pathways, thereby affecting various biological functions. The phosphorylation of five tyrosine residues is necessary for this protein to nucleate distinct signaling effectors following B cell receptor activation. Mutations in this gene cause hypoglobulinemia and absent B cells, a disease in which the pro- to pre-B-cell transition is developmentally blocked. Deficiency in this protein has also been shown in some cases of pre-B acute lymphoblastic leukemia. Alternatively spliced transcript variants have been found for this gene. [provided by RefSeq, May 2012],



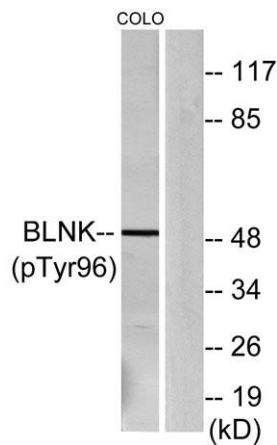
Western Blot analysis of COLO205 cells using Phospho-BLNK (Y96) Polyclonal Antibody



Enzyme-Linked Immunosorbent Assay (Phospho-ELISA) for Immunogen Phosphopeptide (Phospho-left) and Non-Phosphopeptide (Phospho-right), using BLNK (Phospho-Tyr96) Antibody



Immunohistochemistry analysis of paraffin-embedded human lymph node, using BLNK (Phospho-Tyr96) Antibody. The picture on the right is blocked with the phospho peptide.



Western blot analysis of lysates from COLO205 cells, using BLNK (Phospho-Tyr96) Antibody. The lane on the right is blocked with the phospho peptide.