

GRO α rabbit pAb**Cat#: orb768556 (Manual)**

For research use only. Not intended for diagnostic use.

Product Name	GRO α rabbit pAb
Host species	Rabbit
Applications	IHC;IF;ELISA
Species Cross-Reactivity	Human;Mouse;Rat
Recommended dilutions	Immunohistochemistry: 1/100 - 1/300. ELISA: 1/10000. Not yet tested in other applications.
Immunogen	The antiserum was produced against synthesized peptide derived from human GRO α . AA range:39-88
Specificity	GRO α Polyclonal Antibody detects endogenous levels of GRO α protein.
Formulation	Liquid in PBS containing 50% glycerol, 0.5% BSA and 0.02% sodium azide..
Storage	Store at -20°C. Avoid repeated freeze-thaw cycles.
Protein Name	Growth-regulated alpha protein
Gene Name	CXCL1
Cellular localization	Secreted.
Purification	The antibody was affinity-purified from rabbit antiserum by affinity-chromatography using epitope-specific immunogen.
Clonality	Polyclonal

Concentration 1 mg/ml

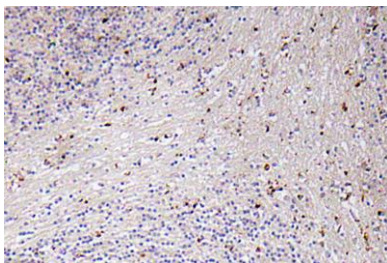
Observed band

Human Gene ID 2919

Human Swiss-Prot Number P09341

Alternative Names CXCL1; GRO; GRO1; GROA; MGSA; SCYB1; Growth-regulated alpha protein; C-X-C motif chemokine 1; GRO-alpha(1-73); Melanoma growth stimulatory activity; MGSA; Neutrophil-activating protein 3; NAP-3

Background This antimicrobial gene encodes a member of the CXC subfamily of chemokines. The encoded protein is a secreted growth factor that signals through the G-protein coupled receptor, CXC receptor 2. This protein plays a role in inflammation and as a chemoattractant for neutrophils. Aberrant expression of this protein is associated with the growth and progression of certain tumors. A naturally occurring processed form of this protein has increased chemotactic activity. Alternate splicing results in coding and non-coding variants of this gene. A pseudogene of this gene is found on chromosome 4. [provided by RefSeq, Sep 2014],



Immunohistochemistry analysis of GRO α antibody in paraffin-embedded human brain tissue.