

NMDA ζ 1 (phospho Ser896) rabbit pAb**Cat#: orb768521 (Manual)**

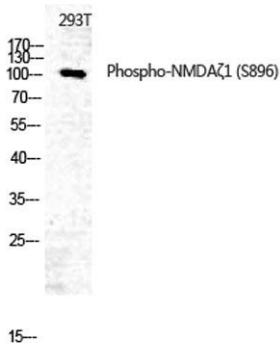
For research use only. Not intended for diagnostic use.

Product Name	NMDA ζ 1 (phospho Ser896) rabbit pAb
Host species	Rabbit
Applications	WB;IHC;IF;ELISA
Species Cross-Reactivity	Human;Mouse;Rat
Recommended dilutions	Western Blot: 1/500 - 1/2000. Immunohistochemistry: 1/100 - 1/300. ELISA: 1/40000. Not yet tested in other applications.
Immunogen	The antiserum was produced against synthesized peptide derived from human NMDAR1 around the phosphorylation site of Ser896. AA range:862-911
Specificity	Phospho-NMDA ζ 1 (S896) Polyclonal Antibody detects endogenous levels of NMDA ζ 1 protein only when phosphorylated at S896.
Formulation	Liquid in PBS containing 50% glycerol, 0.5% BSA and 0.02% sodium azide..
Storage	Store at -20°C. Avoid repeated freeze-thaw cycles.
Protein Name	Glutamate [NMDA] receptor subunit zeta-1
Gene Name	GRIN1
Cellular localization	Cell membrane ; Multi-pass membrane protein . Cell junction, synapse, postsynaptic cell membrane . Cell junction, synapse, postsynaptic density . Enriched in postsynaptic plasma membrane and postsynaptic densities. .
Purification	The antibody was affinity-purified from rabbit antiserum by affinity-chromatography using epitope-specific immunogen.

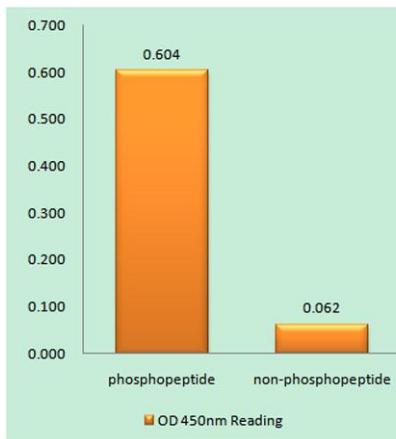
Clonality	Polyclonal
Concentration	1 mg/ml
Observed band	105kD
Human Gene ID	2902
Human Swiss-Prot Number	Q05586
Alternative Names	GRIN1; NMDAR1; Glutamate [NMDA] receptor subunit zeta-1; N-methyl-D-aspartate receptor subunit NR1; NMD-R1

Background

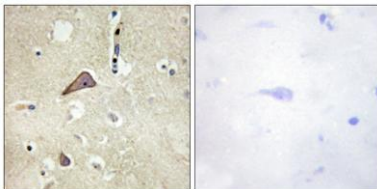
The protein encoded by this gene is a critical subunit of N-methyl-D-aspartate receptors, members of the glutamate receptor channel superfamily which are heteromeric protein complexes with multiple subunits arranged to form a ligand-gated ion channel. These subunits play a key role in the plasticity of synapses, which is believed to underlie memory and learning. Cell-specific factors are thought to control expression of different isoforms, possibly contributing to the functional diversity of the subunits. Alternatively spliced transcript variants have been described. [provided by RefSeq, Jul 2008],



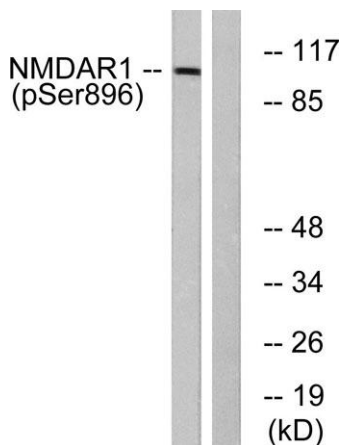
Western Blot analysis of 293T using Phospho-NMDAζ1 (S896) Polyclonal Antibody. Antibody was diluted at 1:500



Enzyme-Linked Immunosorbent Assay (Phospho-ELISA) for Immunogen Phosphopeptide (Phospho-left) and Non-Phosphopeptide (Phospho-right), using NMDAR1 (Phospho-Ser896) Antibody



Immunohistochemistry analysis of paraffin-embedded human brain, using NMDAR1 (Phospho-Ser896) Antibody. The picture on the right is blocked with the phospho peptide.



Western blot analysis of lysates from K562 cells treated with PMA 125ng/ml 30', using NMDAR1 (Phospho-Ser896) Antibody. The lane on the right is blocked with the phospho peptide.