

**C3G (phospho Tyr504) rabbit pAb****Cat#: orb768507 (Manual)**

For research use only. Not intended for diagnostic use.

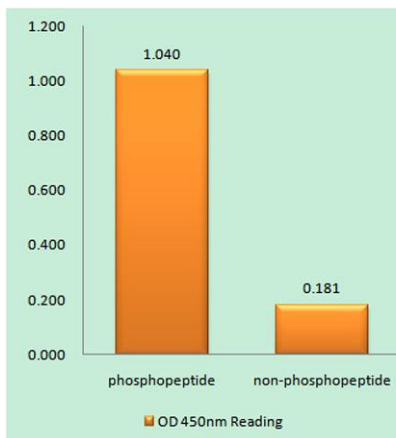
<b>Product Name</b>	C3G (phospho Tyr504) rabbit pAb
<b>Host species</b>	Rabbit
<b>Applications</b>	WB;IHC;IF;ELISA
<b>Species Cross-Reactivity</b>	Human;Rat;Mouse;
<b>Recommended dilutions</b>	Western Blot: 1/500 - 1/2000. ELISA: 1/10000. Not yet tested in other applications.
<b>Immunogen</b>	The antiserum was produced against synthesized peptide derived from human RapGEF1 around the phosphorylation site of Tyr504. AA range:470-519
<b>Specificity</b>	Phospho-C3G (Y504) Polyclonal Antibody detects endogenous levels of C3G protein only when phosphorylated at Y504.
<b>Formulation</b>	Liquid in PBS containing 50% glycerol, 0.5% BSA and 0.02% sodium azide..
<b>Storage</b>	Store at -20°C. Avoid repeated freeze-thaw cycles.
<b>Protein Name</b>	Rap guanine nucleotide exchange factor 1
<b>Gene Name</b>	RAPGEF1
<b>Cellular localization</b>	Early endosome .
<b>Purification</b>	The antibody was affinity-purified from rabbit antiserum by affinity-chromatography using epitope-specific immunogen.
<b>Clonality</b>	Polyclonal

Explore. Bioreagents.

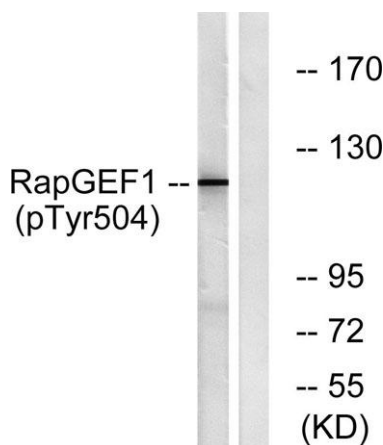
<b>Concentration</b>	1 mg/ml
<b>Observed band</b>	120kD
<b>Human Gene ID</b>	2889
<b>Human Swiss-Prot Number</b>	Q13905
<b>Alternative Names</b>	RAPGEF1; GRF2; Rap guanine nucleotide exchange factor 1; CRK SH3-binding GNRP; Guanine nucleotide-releasing factor 2; Protein C3G

### Background

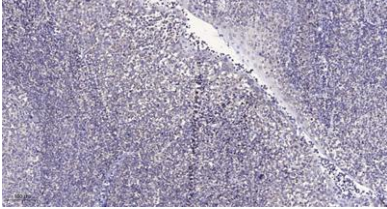
This gene encodes a human guanine nucleotide exchange factor. It transduces signals from CRK by binding the SH3 domain of CRK, and activating several members of the Ras family of GTPases. This signaling cascade that may be involved in apoptosis, integrin-mediated signal transduction, and cell transformation. Several alternatively spliced transcript variants of this gene have been described, but the full-length nature of some variants has not been determined. [provided by RefSeq, Jul 2008],



**Enzyme-Linked Immunosorbent Assay (Phospho-ELISA) for Immunogen Phosphopeptide (Phospho-left) and Non-Phosphopeptide (Phospho-right), using RapGEF1 (Phospho-Tyr504) Antibody**



**Western blot analysis of lysates from HepG2 cells treated with Na<sub>3</sub>VO<sub>4</sub> 0.3nM 40', using RapGEF1 (Phospho-Tyr504) Antibody. The lane on the right is blocked with the phospho peptide.**



**Immunohistochemical analysis of paraffin-embedded human tonsil. 1, Antibody was diluted at 1:200(4° overnight). 2, Tris-EDTA,pH9.0 was used for antigen retrieval. 3,Secondary antibody was diluted at 1:200(room temperature, 30min).**