

**GRB10 (phospho Tyr67) rabbit pAb****Cat#: orb768506 (Manual)**

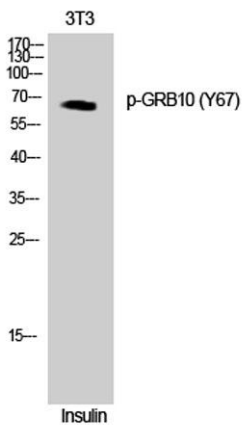
For research use only. Not intended for diagnostic use.

<b>Product Name</b>	GRB10 (phospho Tyr67) rabbit pAb
<b>Host species</b>	Rabbit
<b>Applications</b>	WB;IHC;IF;ELISA
<b>Species Cross-Reactivity</b>	Human;Rat;Mouse;
<b>Recommended dilutions</b>	Western Blot: 1/500 - 1/2000. Immunohistochemistry: 1/100 - 1/300. Immunofluorescence: 1/200 - 1/1000. ELISA: 1/20000. Not yet tested in other applications.
<b>Immunogen</b>	The antiserum was produced against synthesized peptide derived from human GRB10 around the phosphorylation site of Tyr67. AA range:33-82
<b>Specificity</b>	Phospho-GRB10 (Y67) Polyclonal Antibody detects endogenous levels of GRB10 protein only when phosphorylated at Y67.
<b>Formulation</b>	Liquid in PBS containing 50% glycerol, 0.5% BSA and 0.02% sodium azide..
<b>Storage</b>	Store at -20°C. Avoid repeated freeze-thaw cycles.
<b>Protein Name</b>	Growth factor receptor-bound protein 10
<b>Gene Name</b>	GRB10
<b>Cellular localization</b>	Cytoplasm . When complexed with NEDD4 and IGF1R, follows IGF1R internalization, remaining associated with early endosomes. Uncouples from IGF1R-containing endosomes before the sorting of the receptor to the lysosomal compartment (By similarity). .
<b>Purification</b>	The antibody was affinity-purified from rabbit antiserum by affinity-chromatography using epitope-specific immunogen.

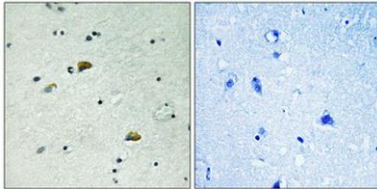
<b>Clonality</b>	Polyclonal
<b>Concentration</b>	1 mg/ml
<b>Observed band</b>	67kD
<b>Human Gene ID</b>	2887
<b>Human Swiss-Prot Number</b>	Q13322
<b>Alternative Names</b>	GRB10; GRBIR; KIAA0207; Growth factor receptor-bound protein 10; GRB10 adapter protein; Insulin receptor-binding protein Grb-IR

## Background

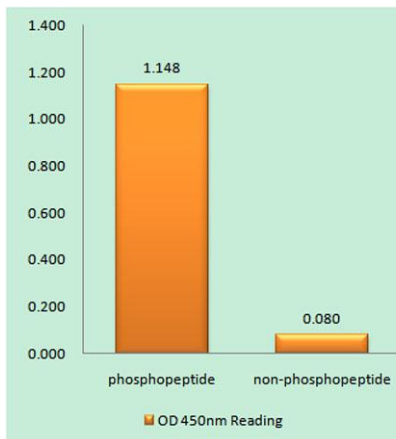
The product of this gene belongs to a small family of adapter proteins that are known to interact with a number of receptor tyrosine kinases and signaling molecules. This gene encodes a growth factor receptor-binding protein that interacts with insulin receptors and insulin-like growth-factor receptors. Overexpression of some isoforms of the encoded protein inhibits tyrosine kinase activity and results in growth suppression. This gene is imprinted in a highly isoform- and tissue-specific manner, with expression observed from the paternal allele in the brain, and from the maternal allele in the placental trophoblasts. Alternatively spliced transcript variants encoding different isoforms have been identified. [provided by RefSeq, Oct 2010],



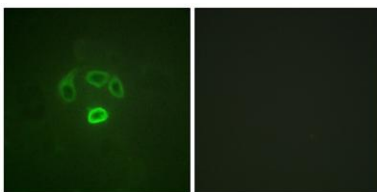
**Western Blot analysis of COLO cells using Phospho-GRB10 (Y67) Polyclonal Antibody**



**Immunohistochemical analysis of paraffin-embedded Human brain. Antibody was diluted at 1:100(4° overnight). High-pressure and temperature Tris-EDTA,pH8.0 was used for antigen retrieval. Negative contrl (right) obtained from antibody was pre-absorbed by immunogen peptide.**



**Enzyme-Linked Immunosorbent Assay (Phospho-ELISA) for Immunogen Phosphopeptide (Phospho-left) and Non-Phosphopeptide (Phospho-right), using GRB10 (Phospho-Tyr67) Antibody**



**Immunofluorescence analysis of HepG2 cells, using GRB10 (Phospho-Tyr67) Antibody. The picture on the right is blocked with the phospho peptide.**