

**GPR37 rabbit pAb****Cat#: orb768490 (Manual)**

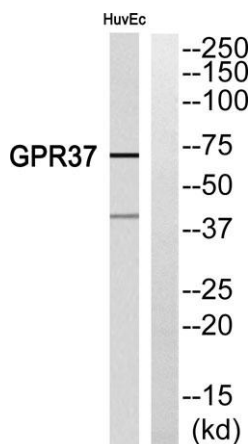
For research use only. Not intended for diagnostic use.

<b>Product Name</b>	GPR37 rabbit pAb
<b>Host species</b>	Rabbit
<b>Applications</b>	WB;ELISA
<b>Species Cross-Reactivity</b>	Human;Mouse;Rat
<b>Recommended dilutions</b>	Western Blot: 1/500 - 1/2000. ELISA: 1/10000. Not yet tested in other applications.
<b>Immunogen</b>	The antiserum was produced against synthesized peptide derived from human GPR37. AA range:211-260
<b>Specificity</b>	GPR37 Polyclonal Antibody detects endogenous levels of GPR37 protein.
<b>Formulation</b>	Liquid in PBS containing 50% glycerol, 0.5% BSA and 0.02% sodium azide..
<b>Storage</b>	Store at -20°C. Avoid repeated freeze-thaw cycles.
<b>Protein Name</b>	Probable G-protein coupled receptor 37
<b>Gene Name</b>	GPR37
<b>Cellular localization</b>	Cell membrane ; Multi-pass membrane protein . Endoplasmic reticulum membrane ; Multi-pass membrane protein .
<b>Purification</b>	The antibody was affinity-purified from rabbit antiserum by affinity-chromatography using epitope-specific immunogen.
<b>Clonality</b>	Polyclonal

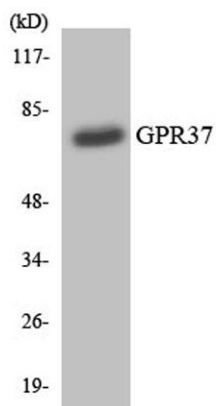
<b>Concentration</b>	1 mg/ml
<b>Observed band</b>	68kD
<b>Human Gene ID</b>	2861
<b>Human Swiss-Prot Number</b>	O15354
<b>Alternative Names</b>	GPR37; Probable G-protein coupled receptor 37; Endothelin B receptor-like protein 1; ETBR-LP-1; Parkin-associated endothelin receptor-like receptor; PAELR

## Background

This gene is a member of the G protein-coupled receptor family. The encoded protein contains seven transmembrane domains and is found in cell and endoplasmic reticulum membranes. G protein-coupled receptors are involved in translating outside signals into G protein mediated intracellular effects. This gene product interacts with Parkin and is involved in juvenile Parkinson disease. [provided by RefSeq, Oct 2012],



Western blot analysis of GPR37 Antibody. The lane on the right is blocked with the GPR37 peptide.



Western blot analysis of the lysates from HT-29 cells using GPR37 antibody.