

**GPR35 rabbit pAb****Cat#: orb768489 (Manual)**

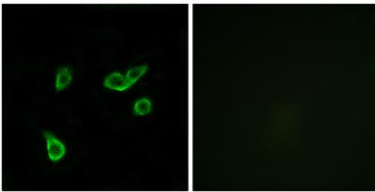
For research use only. Not intended for diagnostic use.

<b>Product Name</b>	GPR35 rabbit pAb
<b>Host species</b>	Rabbit
<b>Applications</b>	WB;IF;ELISA
<b>Species Cross-Reactivity</b>	Human;Rat;Mouse;
<b>Recommended dilutions</b>	Western Blot: 1/500 - 1/2000. Immunofluorescence: 1/200 - 1/1000. ELISA: 1/20000. Not yet tested in other applications.
<b>Immunogen</b>	The antiserum was produced against synthesized peptide derived from human GPR35. AA range:51-100
<b>Specificity</b>	GPR35 Polyclonal Antibody detects endogenous levels of GPR35 protein.
<b>Formulation</b>	Liquid in PBS containing 50% glycerol, 0.5% BSA and 0.02% sodium azide..
<b>Storage</b>	Store at -20°C. Avoid repeated freeze-thaw cycles.
<b>Protein Name</b>	G-protein coupled receptor 35
<b>Gene Name</b>	GPR35
<b>Cellular localization</b>	Cell membrane ; Multi-pass membrane protein . Internalized to the cytoplasm after exposure to kynurenic acid.
<b>Purification</b>	The antibody was affinity-purified from rabbit antiserum by affinity-chromatography using epitope-specific immunogen.
<b>Clonality</b>	Polyclonal

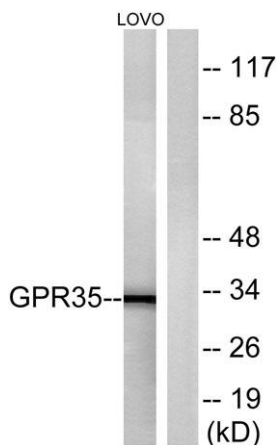
<b>Concentration</b>	1 mg/ml
<b>Observed band</b>	34kD
<b>Human Gene ID</b>	2859
<b>Human Swiss-Prot Number</b>	Q9HC97
<b>Alternative Names</b>	GPR35; G-protein coupled receptor 35; Kynurenic acid receptor; KYNA receptor

## Background

function:Orphan receptor.,similarity:Belongs to the G-protein coupled receptor 1 family.,tissue specificity:Expressed in all adult and fetal tissues examined, including pancreatic islets and skeletal muscle, with relatively higher levels in adult lung, small intestine, colon and stomach.,



Immunofluorescence analysis of A549 cells, using GPR35 Antibody. The picture on the right is blocked with the synthesized peptide.



Western blot analysis of lysates from LOVO cells, using GPR35 Antibody. The lane on the right is blocked with the synthesized peptide.