

Laminin α -1 rabbit pAb**Cat#: orb768469 (Manual)**

For research use only. Not intended for diagnostic use.

Product Name	Laminin α -1 rabbit pAb
Host species	Rabbit
Applications	WB;ELISA;IHC
Species Cross-Reactivity	Human;Rat;Mouse;
Recommended dilutions	WB 1:500-2000;IHC-p 1:50-300; ELISA 2000-20000
Immunogen	The antiserum was produced against synthesized peptide derived from human LAMA1. AA range:2501-2550
Specificity	Laminin α -1 Polyclonal Antibody detects endogenous levels of Laminin α -1 protein.
Formulation	Liquid in PBS containing 50% glycerol, 0.5% BSA and 0.02% sodium azide..
Storage	Store at -20°C. Avoid repeated freeze-thaw cycles.
Protein Name	Laminin subunit alpha-1
Gene Name	LAMA1
Cellular localization	Secreted, extracellular space, extracellular matrix, basement membrane. Major component.
Purification	The antibody was affinity-purified from rabbit antiserum by affinity-chromatography using epitope-specific immunogen.
Clonality	Polyclonal

Concentration 1 mg/ml

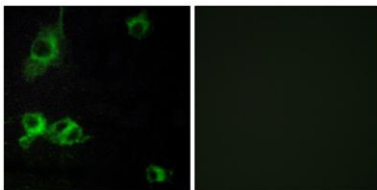
Observed band

Human Gene ID 284217

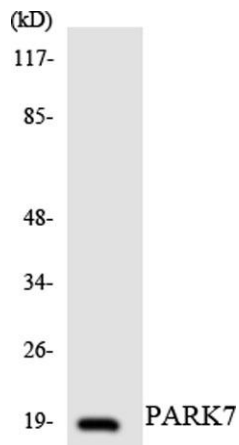
Human Swiss-Prot Number P25391

Alternative Names LAMA1; LAMA; Laminin subunit alpha-1; Laminin A chain; Laminin-1 subunit alpha; Laminin-3 subunit alpha; S-laminin subunit alpha; S-LAM alpha

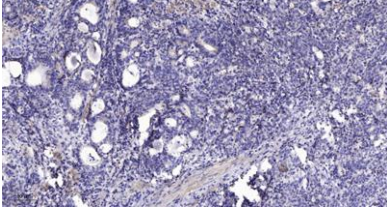
Background This gene encodes one of the alpha 1 subunits of laminin. The laminins are a family of extracellular matrix glycoproteins that have a heterotrimeric structure consisting of an alpha, beta and gamma chain. These proteins make up a major component of the basement membrane and have been implicated in a wide variety of biological processes including cell adhesion, differentiation, migration, signaling, neurite outgrowth and metastasis. Mutations in this gene may be associated with Poretti-Boltshauser syndrome. [provided by RefSeq, Sep 2014],



Immunofluorescence analysis of COS7 cells, using LAMA1 Antibody. The picture on the right is blocked with the synthesized peptide.



Western blot analysis of the lysates from HUVEC cells using PARK7 antibody.



Immunohistochemical analysis of paraffin-embedded human Gastric adenocarcinoma. 1, Antibody was diluted at 1:200(4° overnight). 2, Tris-EDTA,pH9.0 was used for antigen retrieval. 3,Secondary antibody was diluted at 1:200(room temperature, 45min).