

**SPAK (phospho Ser323) rabbit pAb****Cat#: orb768432 (Manual)**

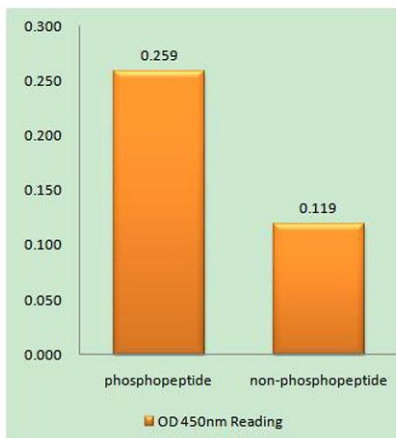
For research use only. Not intended for diagnostic use.

<b>Product Name</b>	SPAK (phospho Ser323) rabbit pAb
<b>Host species</b>	Rabbit
<b>Applications</b>	IHC;IF;ELISA
<b>Species Cross-Reactivity</b>	Human;Mouse;Rat
<b>Recommended dilutions</b>	Immunohistochemistry: 1/100 - 1/300. ELISA: 1/5000. Not yet tested in other applications.
<b>Immunogen</b>	The antiserum was produced against synthesized peptide derived from human STK39 around the phosphorylation site of Ser325. AA range:291-340
<b>Specificity</b>	Phospho-SPAK (S325) Polyclonal Antibody detects endogenous levels of SPAK protein only when phosphorylated at S325.
<b>Formulation</b>	Liquid in PBS containing 50% glycerol, 0.5% BSA and 0.02% sodium azide..
<b>Storage</b>	Store at -20°C. Avoid repeated freeze-thaw cycles.
<b>Protein Name</b>	STE20/SPS1-related proline-alanine-rich protein kinase
<b>Gene Name</b>	STK39
<b>Cellular localization</b>	Cytoplasm . Nucleus . Nucleus when caspase-cleaved. .
<b>Purification</b>	The antibody was affinity-purified from rabbit antiserum by affinity-chromatography using epitope-specific immunogen.
<b>Clonality</b>	Polyclonal

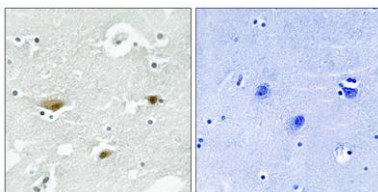
<b>Concentration</b>	1 mg/ml
<b>Observed band</b>	
<b>Human Gene ID</b>	27347
<b>Human Swiss-Prot Number</b>	Q9UEW8
<b>Alternative Names</b>	STK39; SPAK; STE20/SPS1-related proline-alanine-rich protein kinase; Ste-20-related kinase; DCHT; Serine/threonine-protein kinase 39

### Background

This gene encodes a serine/threonine kinase that is thought to function in the cellular stress response pathway. The kinase is activated in response to hypotonic stress, leading to phosphorylation of several cation-chloride-coupled cotransporters. The catalytically active kinase specifically activates the p38 MAP kinase pathway, and its interaction with p38 decreases upon cellular stress, suggesting that this kinase may serve as an intermediate in the response to cellular stress. [provided by RefSeq, Jul 2008],



**Enzyme-Linked Immunosorbent Assay (Phospho-ELISA) for Immunogen Phosphopeptide (Phospho-left) and Non-Phosphopeptide (Phospho-right), using STK39 (Phospho-Ser325) Antibody**



**Immunohistochemistry analysis of paraffin-embedded human brain, using STK39 (Phospho-Ser325) Antibody. The picture on the right is blocked with the phosphopeptide.**



Explore. Bioreagents.

[www.biorbyt.com](http://www.biorbyt.com)