

Contactin 6 rabbit pAb**Cat#: orb768427 (Manual)**

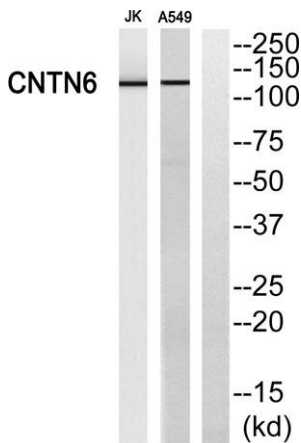
For research use only. Not intended for diagnostic use.

Product Name	Contactin 6 rabbit pAb
Host species	Rabbit
Applications	WB;ELISA
Species Cross-Reactivity	Human;Mouse
Recommended dilutions	Western Blot: 1/500 - 1/2000. ELISA: 1/40000. Not yet tested in other applications.
Immunogen	The antiserum was produced against synthesized peptide derived from human CNTN6. AA range:331-380
Specificity	Contactin 6 Polyclonal Antibody detects endogenous levels of Contactin 6 protein.
Formulation	Liquid in PBS containing 50% glycerol, 0.5% BSA and 0.02% sodium azide..
Storage	Store at -20°C. Avoid repeated freeze-thaw cycles.
Protein Name	Contactin-6
Gene Name	CNTN6
Cellular localization	Cell membrane ; Lipid-anchor, GPI-anchor .
Purification	The antibody was affinity-purified from rabbit antiserum by affinity-chromatography using epitope-specific immunogen.
Clonality	Polyclonal

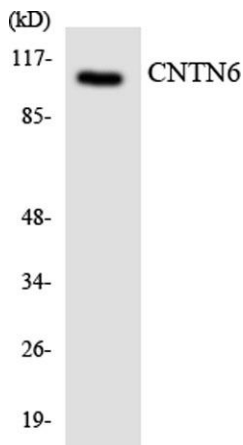
Concentration	1 mg/ml
Observed band	
Human Gene ID	27255
Human Swiss-Prot Number	Q9UQ52
Alternative Names	CNTN6; Contactin-6; Neural recognition molecule NB-3; hNB-3

Background

The protein encoded by this gene is a member of the immunoglobulin superfamily. It is a glycosylphosphatidylinositol (GPI)-anchored neuronal membrane protein that functions as a cell adhesion molecule. It may play a role in the formation of axon connections in the developing nervous system. Alternative splicing results in multiple transcript variants. [provided by RefSeq, Jan 2014].



Western blot analysis of CNTN6 Antibody. The lane on the right is blocked with the CNTN6 peptide.



Western blot analysis of the lysates from HeLa cells using CNTN6 antibody.