

**LAT rabbit pAb****Cat#: orb768410 (Manual)**

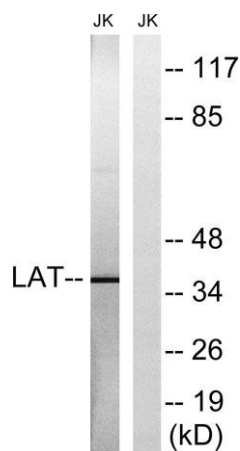
For research use only. Not intended for diagnostic use.

<b>Product Name</b>	LAT rabbit pAb
<b>Host species</b>	Rabbit
<b>Applications</b>	WB;ELISA;IHC
<b>Species Cross-Reactivity</b>	Human;Rat;Mouse;
<b>Recommended dilutions</b>	WB 1:500-2000;IHC-p 1:50-300; ELISA 2000-20000
<b>Immunogen</b>	The antiserum was produced against synthesized peptide derived from human LAT. AA range:86-135
<b>Specificity</b>	LAT Polyclonal Antibody detects endogenous levels of LAT protein.
<b>Formulation</b>	Liquid in PBS containing 50% glycerol, 0.5% BSA and 0.02% sodium azide..
<b>Storage</b>	Store at -20°C. Avoid repeated freeze-thaw cycles.
<b>Protein Name</b>	Linker for activation of T-cells family member 1
<b>Gene Name</b>	LAT
<b>Cellular localization</b>	Cell membrane ; Single-pass type III membrane protein . Present in lipid rafts.
<b>Purification</b>	The antibody was affinity-purified from rabbit antiserum by affinity-chromatography using epitope-specific immunogen.
<b>Clonality</b>	Polyclonal

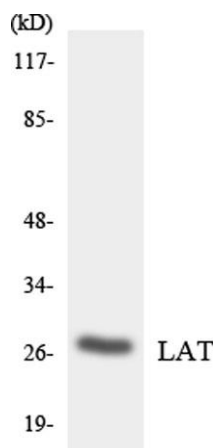
<b>Concentration</b>	1 mg/ml
<b>Observed band</b>	38kD
<b>Human Gene ID</b>	27040
<b>Human Swiss-Prot Number</b>	O43561
<b>Alternative Names</b>	LAT; Linker for activation of T-cells family member 1; 36 kDa phosphotyrosine adapter protein; pp36; p36-38

**Background**

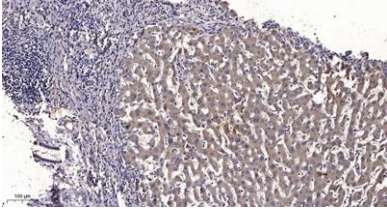
The protein encoded by this gene is phosphorylated by ZAP-70/Syk protein tyrosine kinases following activation of the T-cell antigen receptor (TCR) signal transduction pathway. This transmembrane protein localizes to lipid rafts and acts as a docking site for SH2 domain-containing proteins. Upon phosphorylation, this protein recruits multiple adaptor proteins and downstream signaling molecules into multimolecular signaling complexes located near the site of TCR engagement. Alternative splicing results in multiple transcript variants encoding different isoforms. [provided by RefSeq, Jul 2008],



**Western blot analysis of lysates from Jurkat cells, using LAT Antibody. The lane on the right is blocked with the synthesized peptide.**



**Western blot analysis of the lysates from HUVEC cells using LAT antibody.**



**Immunohistochemical analysis of paraffin-embedded human liver cancer. 1, Antibody was diluted at 1:200(4° overnight). 2, Tris-EDTA,pH9.0 was used for antigen retrieval. 3,Secondary antibody was diluted at 1:200(room temperature, 45min).**