

**Connexin 37 rabbit pAb****Cat#: orb768403 (Manual)**

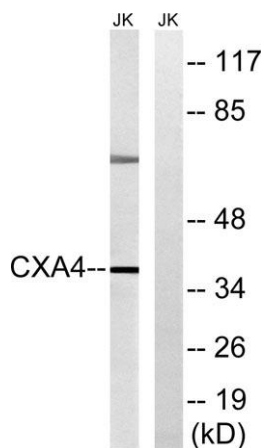
For research use only. Not intended for diagnostic use.

<b>Product Name</b>	Connexin 37 rabbit pAb
<b>Host species</b>	Rabbit
<b>Applications</b>	WB;ELISA
<b>Species Cross-Reactivity</b>	Human;Mouse;Rat
<b>Recommended dilutions</b>	Western Blot: 1/500 - 1/2000. ELISA: 1/40000. Not yet tested in other applications.
<b>Immunogen</b>	The antiserum was produced against synthesized peptide derived from human GJA4. AA range:81-130
<b>Specificity</b>	Connexin 37 Polyclonal Antibody detects endogenous levels of Connexin 37 protein.
<b>Formulation</b>	Liquid in PBS containing 50% glycerol, 0.5% BSA and 0.02% sodium azide..
<b>Storage</b>	Store at -20°C. Avoid repeated freeze-thaw cycles.
<b>Protein Name</b>	Gap junction alpha-4 protein
<b>Gene Name</b>	GJA4
<b>Cellular localization</b>	Cell membrane; Multi-pass membrane protein. Cell junction, gap junction.
<b>Purification</b>	The antibody was affinity-purified from rabbit antiserum by affinity-chromatography using epitope-specific immunogen.
<b>Clonality</b>	Polyclonal

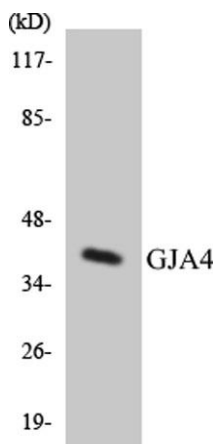
<b>Concentration</b>	1 mg/ml
<b>Observed band</b>	37kD
<b>Human Gene ID</b>	2701
<b>Human Swiss-Prot Number</b>	P35212
<b>Alternative Names</b>	GJA4; Gap junction alpha-4 protein; Connexin-37; Cx37

## Background

This gene encodes a member of the connexin gene family. The encoded protein is a component of gap junctions, which are composed of arrays of intercellular channels that provide a route for the diffusion of low molecular weight materials from cell to cell. Mutations in this gene have been associated with atherosclerosis and a higher risk of myocardial infarction. [provided by RefSeq, Jul 2008],



Western blot analysis of lysates from Jurkat cells, using GJA4 Antibody. The lane on the right is blocked with the synthesized peptide.



Western blot analysis of the lysates from 293 cells using GJA4 antibody.