

**GFRP rabbit pAb****Cat#: orb768368 (Manual)**

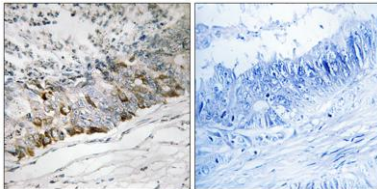
For research use only. Not intended for diagnostic use.

<b>Product Name</b>	GFRP rabbit pAb
<b>Host species</b>	Rabbit
<b>Applications</b>	IHC;IF;ELISA
<b>Species Cross-Reactivity</b>	Human;Rat
<b>Recommended dilutions</b>	Immunohistochemistry: 1/100 - 1/300. ELISA: 1/10000. Not yet tested in other applications.
<b>Immunogen</b>	The antiserum was produced against synthesized peptide derived from human GCHFR. AA range:31-80
<b>Specificity</b>	GFRP Polyclonal Antibody detects endogenous levels of GFRP protein.
<b>Formulation</b>	Liquid in PBS containing 50% glycerol, 0.5% BSA and 0.02% sodium azide..
<b>Storage</b>	Store at -20°C. Avoid repeated freeze-thaw cycles.
<b>Protein Name</b>	GTP cyclohydrolase 1 feedback regulatory protein
<b>Gene Name</b>	GCHFR
<b>Cellular localization</b>	Nucleus . Nucleus membrane . Cytoplasm, cytosol .
<b>Purification</b>	The antibody was affinity-purified from rabbit antiserum by affinity-chromatography using epitope-specific immunogen.
<b>Clonality</b>	Polyclonal

<b>Concentration</b>	1 mg/ml
<b>Observed band</b>	
<b>Human Gene ID</b>	2644
<b>Human Swiss-Prot Number</b>	P30047
<b>Alternative Names</b>	GCHFR; GFRP; GTP cyclohydrolase 1 feedback regulatory protein; GFRP; GTP cyclohydrolase I feedback regulatory protein; p35

**Background**

GTP cyclohydrolase I feedback regulatory protein binds to and mediates tetrahydrobiopterin inhibition of GTP cyclohydrolase I. The regulatory protein, GCHFR, consists of a homodimer. It is postulated that GCHFR may play a role in regulating phenylalanine metabolism in the liver and in the production of biogenic amine neurotransmitters and nitric oxide. [provided by RefSeq, Jul 2008],



**Immunohistochemistry analysis of paraffin-embedded human colon carcinoma tissue, using GCHFR Antibody. The picture on the right is blocked with the synthesized peptide.**