

GATA-3 (phospho Ser308) rabbit pAb**Cat#: orb768354 (Manual)**

For research use only. Not intended for diagnostic use.

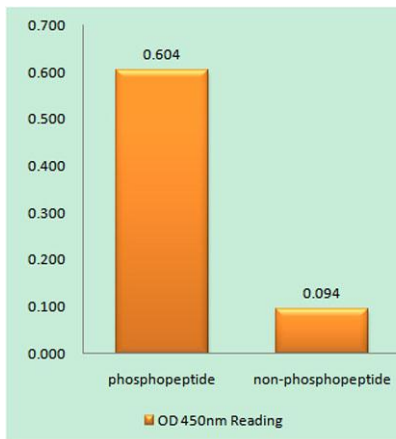
Product Name	GATA-3 (phospho Ser308) rabbit pAb
Host species	Rabbit
Applications	WB;IF;ELISA
Species Cross-Reactivity	Human;Mouse
Recommended dilutions	Immunofluorescence: 1/200 - 1/1000. ELISA: 1/10000. Not yet tested in other applications.
Immunogen	The antiserum was produced against synthesized peptide derived from human GATA3 around the phosphorylation site of Ser308. AA range:274-323
Specificity	Phospho-GATA-3 (S308) Polyclonal Antibody detects endogenous levels of GATA-3 protein only when phosphorylated at S308.
Formulation	Liquid in PBS containing 50% glycerol, 0.5% BSA and 0.02% sodium azide..
Storage	Store at -20°C. Avoid repeated freeze-thaw cycles.
Protein Name	Trans-acting T-cell-specific transcription factor GATA-3
Gene Name	GATA3
Cellular localization	Nucleus.
Purification	The antibody was affinity-purified from rabbit antiserum by affinity-chromatography using epitope-specific immunogen.
Clonality	Polyclonal

Explore. Bioreagents.

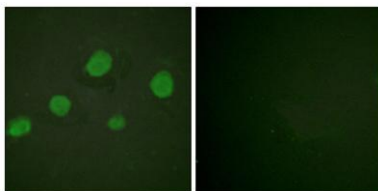
Concentration	1 mg/ml
Observed band	
Human Gene ID	2625
Human Swiss-Prot Number	P23771
Alternative Names	GATA3; Trans-acting T-cell-specific transcription factor GATA-3; GATA-binding factor 3

Background

This gene encodes a protein which belongs to the GATA family of transcription factors. The protein contains two GATA-type zinc fingers and is an important regulator of T-cell development and plays an important role in endothelial cell biology. Defects in this gene are the cause of hypoparathyroidism with sensorineural deafness and renal dysplasia. [provided by RefSeq, Nov 2009],



Enzyme-Linked Immunosorbent Assay (Phospho-ELISA) for Immunogen Phosphopeptide (Phospho-left) and Non-Phosphopeptide (Phospho-right), using GATA3 (Phospho-Ser308) Antibody



Immunofluorescence analysis of HUVEC cells, using GATA3 (Phospho-Ser308) Antibody. The picture on the right is blocked with the phospho peptide.