

GATA-2 (phospho Ser401) rabbit pAb**Cat#: orb768352 (Manual)**

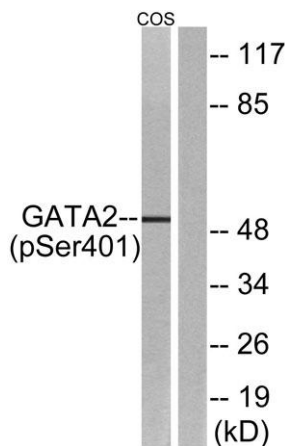
For research use only. Not intended for diagnostic use.

Product Name	GATA-2 (phospho Ser401) rabbit pAb
Host species	Rabbit
Applications	WB;ELISA
Species Cross-Reactivity	Human;Monkey
Recommended dilutions	Western Blot: 1/500 - 1/2000. ELISA: 1/5000. Not yet tested in other applications.
Immunogen	The antiserum was produced against synthesized peptide derived from human GATA2 around the phosphorylation site of Ser401. AA range:367-416
Specificity	Phospho-GATA-2 (S401) Polyclonal Antibody detects endogenous levels of GATA-2 protein only when phosphorylated at S401.
Formulation	Liquid in PBS containing 50% glycerol, 0.5% BSA and 0.02% sodium azide..
Storage	Store at -20°C. Avoid repeated freeze-thaw cycles.
Protein Name	Endothelial transcription factor GATA-2
Gene Name	GATA2
Cellular localization	Nucleus.
Purification	The antibody was affinity-purified from rabbit antiserum by affinity-chromatography using epitope-specific immunogen.
Clonality	Polyclonal

Concentration	1 mg/ml
Observed band	50kD
Human Gene ID	2624
Human Swiss-Prot Number	P23769
Alternative Names	GATA2; Endothelial transcription factor GATA-2; GATA-binding protein 2

Background

This gene encodes a member of the GATA family of zinc-finger transcription factors that are named for the consensus nucleotide sequence they bind in the promoter regions of target genes. The encoded protein plays an essential role in regulating transcription of genes involved in the development and proliferation of hematopoietic and endocrine cell lineages. Alternative splicing results in multiple transcript variants.[provided by RefSeq, Mar 2009],



Western blot analysis of lysates from COS7 cells treated with TNF 20ng/ml 5', using GATA2 (Phospho-Ser401) Antibody. The lane on the right is blocked with the phospho peptide.