

**MIP-T3 rabbit pAb****Cat#: orb768342 (Manual)**

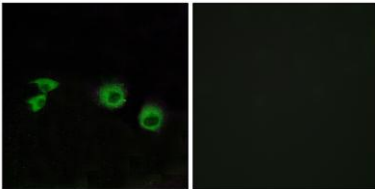
For research use only. Not intended for diagnostic use.

<b>Product Name</b>	MIP-T3 rabbit pAb
<b>Host species</b>	Rabbit
<b>Applications</b>	WB;IHC;IF;ELISA
<b>Species Cross-Reactivity</b>	Human;Rat;Mouse;
<b>Recommended dilutions</b>	Immunohistochemistry: 1/100 - 1/300. Immunofluorescence: 1/200 - 1/1000. ELISA: 1/10000. Not yet tested in other applications.
<b>Immunogen</b>	The antiserum was produced against synthesized peptide derived from human MIPT3. AA range:221-270
<b>Specificity</b>	MIP-T3 Polyclonal Antibody detects endogenous levels of MIP-T3 protein.
<b>Formulation</b>	Liquid in PBS containing 50% glycerol, 0.5% BSA and 0.02% sodium azide..
<b>Storage</b>	Store at -20°C. Avoid repeated freeze-thaw cycles.
<b>Protein Name</b>	TRAF3-interacting protein 1
<b>Gene Name</b>	TRAF3IP1
<b>Cellular localization</b>	Cytoplasm, cytoskeleton . Cell projection, cilium . Cytoplasm, cytoskeleton, cilium axoneme . Cytoplasm, cytoskeleton, cilium basal body . Microtubules (PubMed:12935900). In the cilium, it is observed at the ciliary base, ciliary transition zone and cilia
<b>Purification</b>	The antibody was affinity-purified from rabbit antiserum by affinity-chromatography using epitope-specific immunogen.

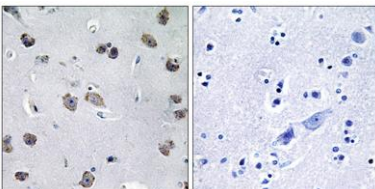
<b>Clonality</b>	Polyclonal
<b>Concentration</b>	1 mg/ml
<b>Observed band</b>	78kD
<b>Human Gene ID</b>	26146
<b>Human Swiss-Prot Number</b>	Q8TDR0
<b>Alternative Names</b>	TRAF3IP1; MIPT3; TRAF3-interacting protein 1; Interleukin-13 receptor alpha 1-binding protein 1; Microtubule-interacting protein associated with TRAF3; MIP-T3

## Background

function: Play an inhibitory role on IL13 signaling by binding to IL13RA1. Involved in suppression of IL13-induced STAT6 phosphorylation, transcriptional activity and DNA-binding. Recruits TRAF3 and DISC1 to the microtubules. similarity: Belongs to the TRAF3IP1 family. subcellular location: Microtubules. subunit: Interacts with IL13RA1. Binds to microtubules, TRAF3 and DISC1. tissue specificity: Ubiquitous.



**Immunofluorescence analysis of MCF7 cells, using MIPT3 Antibody. The picture on the right is blocked with the synthesized peptide.**



**Immunohistochemistry analysis of paraffin-embedded human brain tissue, using MIPT3 Antibody. The picture on the right is blocked with the synthesized peptide.**



Explore. Bioreagents.

[www.biorbyt.com](http://www.biorbyt.com)