

GAP-43 (phospho Ser41) rabbit pAb**Cat#: orb768331 (Manual)**

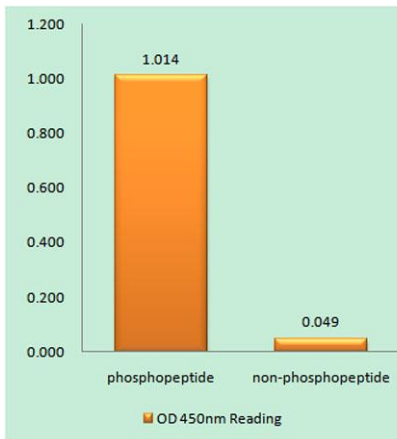
For research use only. Not intended for diagnostic use.

Product Name	GAP-43 (phospho Ser41) rabbit pAb
Host species	Rabbit
Applications	IF;ELISA
Species Cross-Reactivity	Human;Mouse;Rat
Recommended dilutions	Immunofluorescence: 1/200 - 1/1000. ELISA: 1/20000. Not yet tested in other applications.
Immunogen	The antiserum was produced against synthesized peptide derived from human GAP43 around the phosphorylation site of Ser41. AA range:8-57
Specificity	Phospho-GAP-43 (S41) Polyclonal Antibody detects endogenous levels of GAP-43 protein only when phosphorylated at S41.
Formulation	Liquid in PBS containing 50% glycerol, 0.5% BSA and 0.02% sodium azide..
Storage	Store at -20°C. Avoid repeated freeze-thaw cycles.
Protein Name	Neuromodulin
Gene Name	GAP43
Cellular localization	Cell membrane ; Peripheral membrane protein ; Cytoplasmic side . Cell projection, growth cone membrane ; Peripheral membrane protein ; Cytoplasmic side . Cell junction, synapse . Cell projection, filopodium membrane ; Peripheral membrane protein . Perikar
Purification	The antibody was affinity-purified from rabbit antiserum by affinity-chromatography using epitope-specific immunogen.

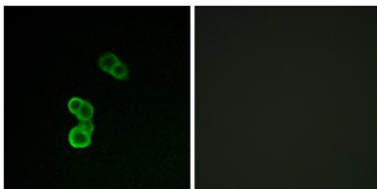
Clonality	Polyclonal
Concentration	1 mg/ml
Observed band	
Human Gene ID	2596
Human Swiss-Prot Number	P17677
Alternative Names	GAP43; Neuromodulin; Axonal membrane protein GAP-43; Growth-associated protein 43; Neural phosphoprotein B-50; pp46

Background

The protein encoded by this gene has been termed a 'growth' or 'plasticity' protein because it is expressed at high levels in neuronal growth cones during development and axonal regeneration. This protein is considered a crucial component of an effective regenerative response in the nervous system. Alternatively spliced transcript variants encoding distinct isoforms have been found for this gene. [provided by RefSeq, Jul 2008],



Enzyme-Linked Immunosorbent Assay (Phospho-ELISA) for Immunogen Phosphopeptide (Phospho-left) and Non-Phosphopeptide (Phospho-right), using GAP43 (Phospho-Ser41) Antibody



Immunofluorescence analysis of MCF-7 cells, using GAP43 (Phospho-Ser41) Antibody. The picture on the right is blocked with the phospho peptide.



Explore. Bioreagents.

www.biorbyt.com