

ALK (phospho Tyr1096) rabbit pAb**Cat#: orb768260 (Manual)**

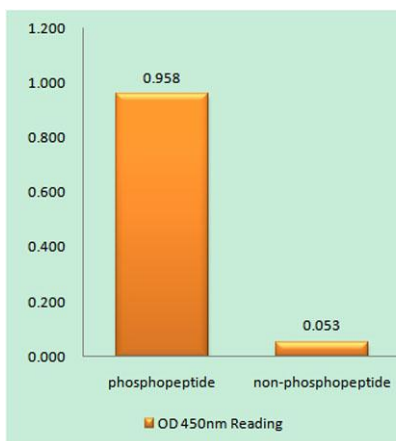
For research use only. Not intended for diagnostic use.

Product Name	ALK (phospho Tyr1096) rabbit pAb
Host species	Rabbit
Applications	IHC;IF;ELISA
Species Cross-Reactivity	Human;Mouse
Recommended dilutions	Immunohistochemistry: 1/100 - 1/300. ELISA: 1/20000. Not yet tested in other applications.
Immunogen	The antiserum was produced against synthesized peptide derived from human ALK around the phosphorylation site of Tyr1096. AA range:1062-1111
Specificity	Phospho-ALK (Y1096) Polyclonal Antibody detects endogenous levels of ALK protein only when phosphorylated at Y1096.
Formulation	Liquid in PBS containing 50% glycerol, 0.5% BSA and 0.02% sodium azide..
Storage	Store at -20°C. Avoid repeated freeze-thaw cycles.
Protein Name	ALK tyrosine kinase receptor
Gene Name	ALK
Cellular localization	Cell membrane ; Single-pass type I membrane protein . Membrane attachment is essential for promotion of neuron-like differentiation and cell proliferation arrest through specific activation of the MAP kinase pathway. .
Purification	The antibody was affinity-purified from rabbit antiserum by affinity-chromatography using epitope-specific immunogen.

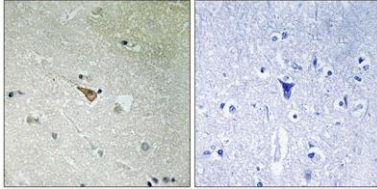
Clonality	Polyclonal
Concentration	1 mg/ml
Observed band	150-240kD
Human Gene ID	238
Human Swiss-Prot Number	Q9UM73
Alternative Names	ALK; ALK tyrosine kinase receptor; Anaplastic lymphoma kinase; CD antigen CD246

Background

This gene encodes a receptor tyrosine kinase, which belongs to the insulin receptor superfamily. This protein comprises an extracellular domain, an hydrophobic stretch corresponding to a single pass transmembrane region, and an intracellular kinase domain. It plays an important role in the development of the brain and exerts its effects on specific neurons in the nervous system. This gene has been found to be rearranged, mutated, or amplified in a series of tumours including anaplastic large cell lymphomas, neuroblastoma, and non-small cell lung cancer. The chromosomal rearrangements are the most common genetic alterations in this gene, which result in creation of multiple fusion genes in tumourigenesis, including ALK (chromosome 2)/EML4 (chromosome 2), ALK/RANBP2 (chromosome 2), ALK/ATIC (chromosome 2), ALK/TFG (chromosome 3), ALK/NPM1 (chromosome 5), ALK/SQSTM1 (chromosome



Enzyme-Linked Immunosorbent Assay (Phospho-ELISA) for Immunogen Phosphopeptide (Phospho-left) and Non-Phosphopeptide (Phospho-right), using ALK (Phospho-Tyr1096) Antibody



Immunohistochemistry analysis of paraffin-embedded human brain, using ALK (Phospho-Tyr1096) Antibody. The picture on the right is blocked with the phospho peptide.