

DAPK2 (phospho Ser318) rabbit pAb**Cat#: orb768245 (Manual)**

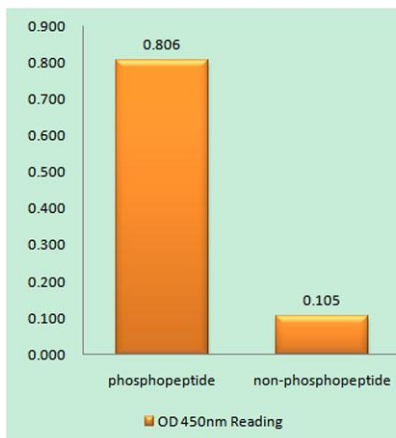
For research use only. Not intended for diagnostic use.

Product Name	DAPK2 (phospho Ser318) rabbit pAb
Host species	Rabbit
Applications	IHC;IF;ELISA
Species Cross-Reactivity	Human;Mouse;Rat
Recommended dilutions	Immunohistochemistry: 1/100 - 1/300. Immunofluorescence: 1/200 - 1/1000. ELISA: 1/5000. Not yet tested in other applications.
Immunogen	The antiserum was produced against synthesized peptide derived from human DAPK2 around the phosphorylation site of Ser318. AA range:284-333
Specificity	Phospho-DAPK2 (S318) Polyclonal Antibody detects endogenous levels of DAPK2 protein only when phosphorylated at S318.
Formulation	Liquid in PBS containing 50% glycerol, 0.5% BSA and 0.02% sodium azide..
Storage	Store at -20°C. Avoid repeated freeze-thaw cycles.
Protein Name	Death-associated protein kinase 2
Gene Name	DAPK2
Cellular localization	Cytoplasm. Cytoplasmic vesicle, autophagosome lumen.
Purification	The antibody was affinity-purified from rabbit antiserum by affinity-chromatography using epitope-specific immunogen.
Clonality	Polyclonal

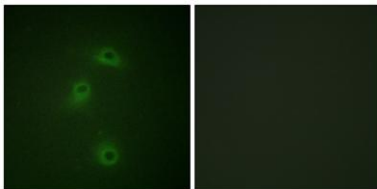
Concentration	1 mg/ml
Observed band	
Human Gene ID	23604
Human Swiss-Prot Number	Q9UIK4
Alternative Names	DAPK2; Death-associated protein kinase 2; DAP kinase 2; DAP-kinase-related protein 1; DRP-1

Background

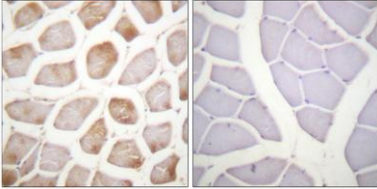
This gene encodes a protein that belongs to the serine/threonine protein kinase family. This protein contains a N-terminal protein kinase domain followed by a conserved calmodulin-binding domain with significant similarity to that of death-associated protein kinase 1 (DAPK1), a positive regulator of programmed cell death. Overexpression of this gene was shown to induce cell apoptosis. It uses multiple polyadenylation sites. [provided by RefSeq, Jul 2008],



Enzyme-Linked Immunosorbent Assay (Phospho-ELISA) for Immunogen Phosphopeptide (Phospho-left) and Non-Phosphopeptide (Phospho-right), using DAPK2 (Phospho-Ser318) Antibody



Immunofluorescence analysis of COS7 cells, using DAPK2 (Phospho-Ser318) Antibody. The picture on the right is blocked with the phospho peptide.



Immunohistochemistry analysis of paraffin-embedded human skeletal muscle, using DAPK2 (Phospho-Ser318) Antibody. The picture on the right is blocked with the phospho peptide.