

**Nup160 rabbit pAb****Cat#: orb768202 (Manual)**

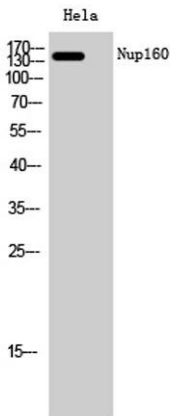
For research use only. Not intended for diagnostic use.

<b>Product Name</b>	Nup160 rabbit pAb
<b>Host species</b>	Rabbit
<b>Applications</b>	WB;ELISA
<b>Species Cross-Reactivity</b>	Human;Mouse
<b>Recommended dilutions</b>	Western Blot: 1/500 - 1/2000. ELISA: 1/20000. Not yet tested in other applications.
<b>Immunogen</b>	The antiserum was produced against synthesized peptide derived from human NUP160. AA range:392-441
<b>Specificity</b>	Nup160 Polyclonal Antibody detects endogenous levels of Nup160 protein.
<b>Formulation</b>	Liquid in PBS containing 50% glycerol, 0.5% BSA and 0.02% sodium azide..
<b>Storage</b>	Store at -20°C. Avoid repeated freeze-thaw cycles.
<b>Protein Name</b>	Nuclear pore complex protein Nup160
<b>Gene Name</b>	NUP160
<b>Cellular localization</b>	Nucleus, nuclear pore complex .
<b>Purification</b>	The antibody was affinity-purified from rabbit antiserum by affinity-chromatography using epitope-specific immunogen.
<b>Clonality</b>	Polyclonal

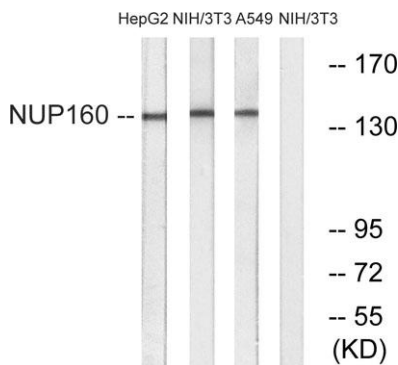
<b>Concentration</b>	1 mg/ml
<b>Observed band</b>	140kD
<b>Human Gene ID</b>	23279
<b>Human Swiss-Prot Number</b>	Q12769
<b>Alternative Names</b>	NUP160; KIAA0197; NUP120; Nuclear pore complex protein Nup160; 160 kDa nucleoporin; Nucleoporin Nup160

**Background**

nucleoporin 160(NUP160) Homo sapiens NUP160 is 1 of up to 60 proteins that make up the 120-MD nuclear pore complex, which mediates nucleoplasmic transport.[supplied by OMIM, Apr 2004],



**Western Blot analysis of HeLa cells using Nup160 Polyclonal Antibody diluted at 1:2000 cells nucleus extracted by Minute™ Cytoplasmic and Nuclear Fractionation kit (SC-003, Invent biotech, MN, USA).**



**Western blot analysis of lysates from NIH/3T3, A549, and HepG2 cells, using NUP160 Antibody. The lane on the right is blocked with the synthesized peptide.**